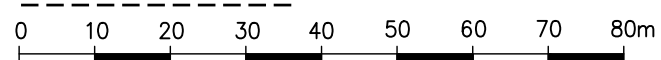


**PROPOSED SUBDIVISION PLAN OF A PORTION OF LOT 1, DISTRICT LOT 2543, ODYD, PLAN EPP127717**

PLAN EPP137444

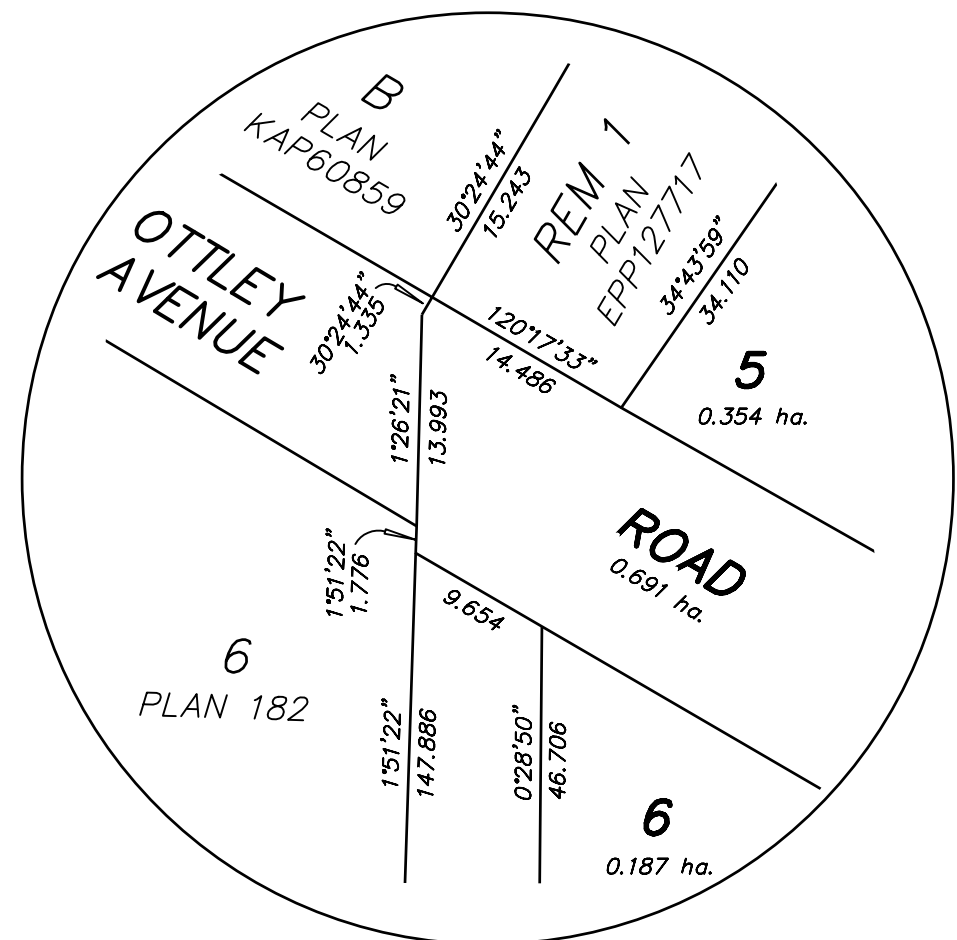
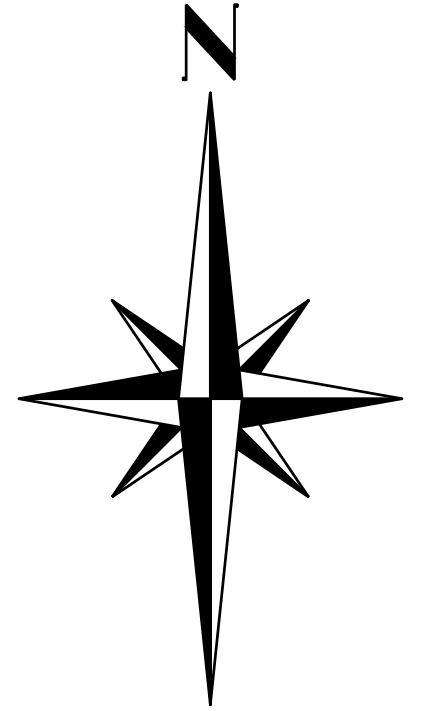
BCGS 82E.052 & 82E.062

SCALE : 1:1000



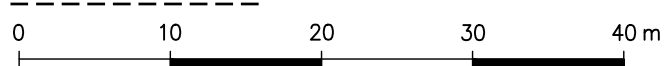
( ALL DIMENSIONS ARE IN METRES )

THE INTENDED PLOT SIZE OF THIS PLAN IS 560mm IN WIDTH BY 864mm IN HEIGHT, D SIZE, WHEN PLOTTED AT A SCALE OF 1:1000



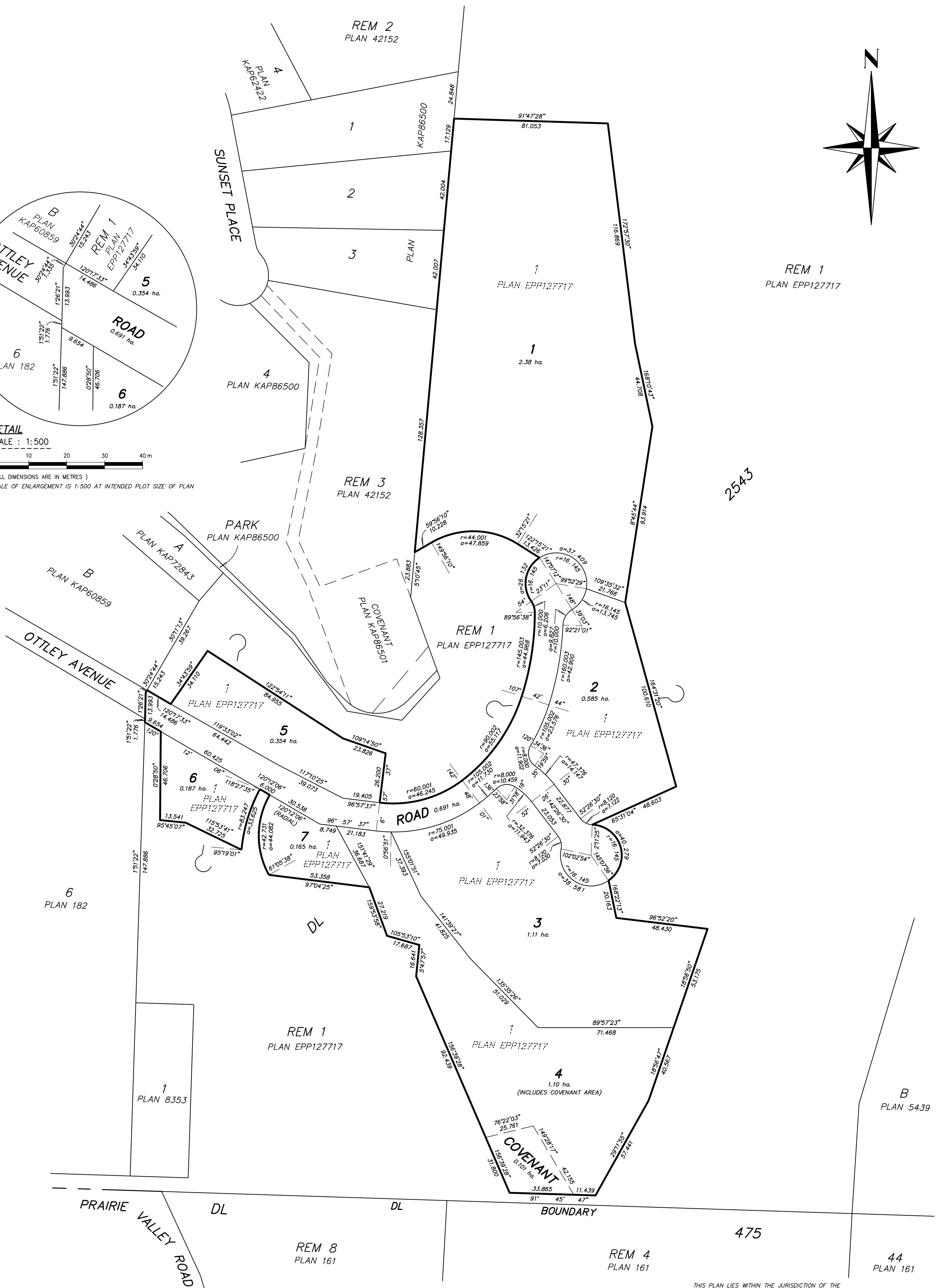
**DETAIL**

SCALE : 1:500



( ALL DIMENSIONS ARE IN METRES )

SCALE OF ENLARGEMENT IS 1:500 AT INTENDED PLOT SIZE OF PLAN



THIS PLAN LIES WITHIN THE JURISDICTION OF THE APPROVING OFFICER FOR THE CORPORATION OF THE DISTRICT OF SUMMERLAND.

THIS PLAN LIES WITHIN THE REGIONAL DISTRICT OF OKANAGAN SIMILKAMEEN.

THE FIELD SURVEY REPRESENTED BY THIS PLAN WAS COMPLETED ON THE \_\_\_\_ DAY OF \_\_\_\_\_ 202\_\_  
DEREK BLASZAK, BCLS, CLS; BCLS 746

**ALLTERRA LAND SURVEYING LTD.**  
264 WESTMINSTER AVENUE W.,  
PENTICTON, B.C. V2A 1J9  
TEL: 250-492-5903  
WWW.ALLTERRASURVEY.CA

OUR FILE NO. 200703-0  
OUR DRAWING NO. 200703-0-PROPSUB-R1.DWG

TH A

DATUM.....	NAD 83 (CSRS)[4.0.0.BC.1] UTM ZONE 11
UTM NORTHING.....	5497366.34
UTM EASTING.....	304809.20
ESTIMATED ABSOLUTE ACCURACY:	0.03 METRES

TH B

DATUM.....	NAD 83 (CSRS)[4.0.0.BC.1] UTM ZONE 11
UTM NORTHING.....	5497127.83
UTM EASTING.....	304777.07
ESTIMATED ABSOLUTE ACCURACY:	0.03 METRES