

Members of Summerland Council attended the recent Union of British Columbia Municipalities (UBCM) annual convention in Vancouver where a record 267 resolutions were put forward for delegates from local governments across the province to consider. Debates from the floor and voting on these resolutions provide the main forum for UBCM policy-making and they allow local governments of all sizes to express concerns, share experiences, and take a united position.

Resolutions endorsed by the UBCM membership become a formal request from local government to other orders of government, usually the province. They can cover any topic and often include a request for support, funding or changes to legislation.

The following four resolutions put forward by Summerland this year were endorsed:

- for senior orders of government to establish and adhere to processing timelines for their grant programs to allow municipalities to plan with greater certainty and financial accuracy;
- for senior orders of governments to ban the use of non-biodegradable produce stickers and approve alternative methods for displaying price codes, given that plastic stickers hinder the organic composting process;
- for the provincial government to increase the maximum penalty (currently \$500) for Bylaw Offence Notices, which is inconsistent with inflation and is not enough of a financial disincentive for many bylaw infractions, especially for short-term rentals; and
- for the UBCM and provincial government to develop a program to help local governments adequately service land in the Agricultural Land Reserve (ALR), the cost of which cannot be recovered from farm-class property taxes and therefore falls unfairly on residential taxpayers. (This issue was also discussed at a meeting of municipalities with more than 20% of their land in the ALR that was organized by the District of Summerland at the UBCM convention.)

Endorsed resolutions are sent to the provincial government and distributed to relevant ministries and agencies. The ministries prepare responses to indicate whether or not they will work towards the request, or they may indicate the issue is already being worked on or that it will be considered at a later date. Responses are packaged and sent to all municipalities in the spring.

~ Mayor Doug Holmes

Diversion of food scraps paying off

Since April to the end of August, an estimated 230 tonnes of food scraps have been diverted from garbage into composting. This is an over 30% drop in the amount of garbage Summerland residents put out to the curb. Estimated net savings comparing to landfilling have been over \$15,000 in five months with the potential offset of over 400 tonnes of CO2 equivalent.

A major issue comes from people placing food scraps all week into hot yard waste carts. Food scraps should be kept indoors or in a protected area until the day of collection to avoid attracting animals. Extra smelly food scraps like meat and fish can be placed in a sealed container in your freezer or fridge if you have room.

To avoid yard waste carts getting gross and sticky, food scraps should be wrapped in paper, placed in a paper bag or be placed between layers of yard waste. Compostable plastics are not allowed to be composted in British Columbia so please never use plastic bags.

As we approach winter, some property owners may want to store extra dry leaves. These can be placed at the bottom of the cart over the winter to help stop food scraps from freezing. If you store the dry leaves in a kraft paper bag, the paper bag can also be used to line the cart as you run low on leaves. Other properties should wrap their food scraps in newspaper or paper bags to avoid freezing issues.

Key contaminants in the compost:

- Containers for food waste. The program can't take cups or other containers.
- Plastic bags. Plastics, including compostable plastics, cannot be composted.
- Lumber and Treated Wood. These materials should not be hidden in yard waste and need to be disposed of at the landfill correctly.

Save the date!

Halloween Haunt Swim

Saturday, October 26 from 6:30—8:00 PM

Join us for some spooky fun, games, swimming and more. Tickets will be available for purchase on September 25.

Interested in volunteering for this event? Contact the Aquatics Team at aquatics@summerland.ca.

*All children under the age of 7 and children 7-10 who cannot swim the width of the pool must have a parent/guardian in the water with them. For more information or registration visit www.summerland.ca/recreation.



Ongoing and upcoming projects

- **Isintok Dam Spillway Upgrade** – The Isintok Lake recreation site will be closed to the public until November during construction of the Isintok Dam Spillway.
- **Prairie Valley Road Improvement Project** – Phase 1 of the Prairie Valley Road Improvement Project is taking place this fall. This project includes the repaving of Prairie Valley Road from Morrow Ave to Cartwright Ave, construction of a multi-use path for pedestrians and cyclists, and replacement of a watermain originally installed in the 1930s. Work will start near the Morrow Ave intersection and progress east.

Construction will pause during the winter months and start back up in the spring. Traffic will be detoured, we thank the public for their patience. For updates, visit

www.summerland.ca.



Unlimited yard & garden waste

Garbage and Unlimited Yard & Garden Waste curbside collection is scheduled for the week of November 26 to 29, 2024 on your collection day.

Sani-station closed for the season

The Trout Creek Sani-Station will be closed for the season as of Tuesday, November 12, 2024.



Open burning permits

Open burning season is from October 15 to April 15 for owners of agricultural properties over two acres. Permits for the purpose of burning orchard prunings are issued by the Fire Department year round and are valid on a four-year cycle. Please visit the Summerland Fire Department anytime to renew or obtain a new permit. Approval **MUST** be obtained each time you burn; please call the Fire Department at 250-494-7211 to verify the venting index and confirmation to burn. **Open burning on residential properties is strictly prohibited.**

College Road seasonal closure

College Road will be closed to vehicular traffic from October 31, 2024 to April 15, 2025.

Proper disposal of invasive plants

Time to think about yard clean up! This is an excellent time of year to remove invasive plants from your property. If you have mature plants with seeds, proper disposal is particularly important. Do not include any invasive plants in your yard waste bins for curbside pick.



Composting is a commonly used disposal technique. But it is NOT appropriate for invasive species. Some seeds can survive the composting process, while others, such as knotweed (pictured above), can resprout from roots or stems. Do not compost or put any invasive plants in your green bin unless you can be sure there is no viable (living) plant material left. Improper disposal of garden waste can result in unwanted plants moving into natural areas or parks adjacent to your property.

Invasive plants with seeds should be carefully bagged or loaded into the back of a truck (covered with a tarp or canopy), and disposed of at the landfill. Be sure to inform the landfill operator that you have invasive plants and not simply yard waste. You want to ensure that your weeds are disposed of in the proper location. For more information, visit www.oasis.ca/how-do-i.

Sewer main and hydrant flushing

The District of Summerland is performing annual sewer main and hydrant flushing throughout Summerland until the end of October. Annual maintenance ensures that sewer mains and hydrants are in good working order. Please use caution when driving by Crews working on the road.

Bear aware

There have been many reports of bears roaming parks and neighbourhoods. Please be cautious when outdoors and while recreating in our natural areas.

Be bear smart

Bears are preparing for their winter slumber. Garbage, bird feeders and tree fruits can attract bears to your yard, family and neighbourhood. Once a bear becomes used to human food sources it becomes habituated, usually resulting in the bear being destroyed. It is important to keep wildlife wild and communities safe.



Tips to prevent attracting bears to your property:

- Garbage - properly secure your garbage and keep it indoors until pick-up or until you can bring it to the landfill. Place your carts at the curb no earlier than 5:00am on your scheduled collection day.
- Compost - use finished compost, leaves, grass or wood chips to cover up fruit or other food waste in your composter. Properly care for your compost by turning it and layering it appropriately to reduce odours.
- Fruit Trees and Grapes - make sure to harvest fruit immediately. Remove all windfall fruit. If you own an orchard, electric fencing is encouraged.
- Pet food, Birdfeeders and Gardens are all attractants for bears. Keep your pet food securely stored indoors. Bring your birdfeeders in for the summer, supplementing them with natural flowers and birdbaths.
- Barbeques - To keep your barbeques safe, make sure that they are properly cleaned, covered and don't leave utensils out overnight.

You can report all wildlife encounters to the BC Conservation Officer Service RAPP Line at 1-877-952-7277 or visit www.wildsafebc.com to learn more about how to protect the species around you.

Keep up to date

The District posts community updates to our website and Facebook account. Council meetings can be viewed on the District's YouTube channel www.youtube.com/c/DistrictofSummerland

website: summerland.ca

Facebook: facebook.com/SummerlandBC

Sign up for our monthly newsletter online:

www.summerland.ca/your-city-hall/newsletter-subscribe

Check out the Mayor's podcast on all major streaming platforms or on the District's website: www.summerland.ca/your-city-hall/mayor-council/mayor-s-podcast

Municipal hall hours of operation: Tuesday - Friday from 8:15 AM to 5:00 PM. Closed Mondays and Statutory Holidays.

Energy savings for heating—setting your thermostat

In winter, heating costs can go up by as much as 140% compared to the rest of the year. One of the most effective things you can do to control your heating costs is to manage your thermostat effectively. A programmable thermostat is a small investment that can help you manage your heating costs by reducing wasted heat. Simply set it to turn on at the times you're home and turn down when you're out during the day, and at night when you're sleeping.

- **Setting your thermostat at the right temperature is important.** Heating costs rise about 5% for every degree above 20°C (68°F) that you set your thermostat.
 - 16°C when you're away from home and sleeping.
 - 21°C when you're relaxing or watching TV.
 - 18°C when you're cooking or doing housework.
- **Set it and forget it.** Set your thermostat to adjust at certain times of the day, like when you're asleep or at work. Have your thermostat warm up right before you usually get home in the evening.
- **Manage settings on the go.** If you make spontaneous evening plans and have a WiFi-enabled smart thermostat, adjust it right from your smartphone so your home doesn't get warmed up for your arrival.
- **Do you have baseboard heating or rely on portable space heaters?** They can be inefficient, especially for large spaces. Make sure you're using yours as efficiently as possible.
- **'Smart' thermostat "learn your routine."** Thermostats like the Nest will learn your daily routine and automatically adjust the temperature for you.

The Summerland Energy Centre – Peak Shaving

Peak shaving is a strategy used to reduce electricity costs and ease the strain on the power grid during times of high demand. It works by using a battery energy storage system to store electricity when power demands are low. During peak demand times the stored energy is used instead of drawing from the grid. This helps to "shave off" the peaks in electricity usage, leading to lower power bills for the District.

Fire Prevention Week

This year's theme is "Smoke Alarms – make them work for you" and runs from October 6 – 12, 2024. For more information, visit www.summerland.ca/city-services/fire-protection/fire-prevention-week.

Transportation Plan Open House

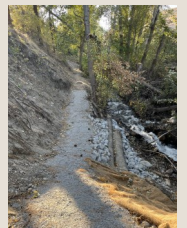
Summerland Transportation Plan—"What We Heard" public open house
October 22, 4:00—7:00 PM

George Ryga Arts and Cultural Centre, 9525 Wharton Street

This will be an opportunity for residents to hear and see the general concepts developed following the Transportation Plan information gathering sessions and survey. Representatives from Urban Systems and District of Summerland staff will be on-site to answer questions and receive feedback.

Centennial Nature Trail

The native cottonwood forest along the Centennial Trail next to Eneas Creek and Peach Orchard Road is a sensitive ecosystem, provincially a red-listed Black cottonwood / common snowberry – roses ecological community. This community supports many wildlife species that depend on dead trees for their habitat, including nesting, such as Lewis' woodpecker and the Western screech-owl. Retention of large dead standing trees with cavities is important to retain as these trees support the critical breeding stage for these species. Mature black cottonwood stands have been heavily impacted in the Okanagan and retention of these features in a mature forest ecosystem is important for the health and longevity of these local wildlife populations.



Dogs welcome on-leash in parks

A friendly reminder to ensure dogs are on-leash while visiting our Summerland parks. Please note that dogs are not permitted on sports fields, sport courts, skate-parks and beaches, or near playgrounds and spray parks. Dogs are required to be on-leash when walking to the designated fenced off-leash dog parks until fully inside the dog park (Peach Orchard Beach Park, Dog Beach, and Dale Meadows Sports Complex). Owners are responsible for their dogs at all times.