

Summerland Downtown Neighbourhood Action Plan

What to Expect During Construction



PROJECT OVERVIEW

Created through extensive technical work and community input, the Downtown Neighbourhood Action Plan paves the way for a lively and revitalized downtown area. It includes actionable items, policy recommendations and serves as a roadmap for future revitalization projects. The first major project under this plan is the Wharton Street Revitalization and Memorial Park Plaza.

KEY MESSAGES

Project Overview

- The Downtown Neighbourhood Action Plan recommends several actions for infrastructure renewal, both above and below ground. These improvements include:
 - Utility upgrades to service new density and growth;
 - Roadway and pedestrian improvements;
 - All-season public washrooms;
 - Identification of cost-effective opportunities to replace overhead electrical wiring with under ground service;
 - Trail of the Okanagan's and other bicycle/ pedestrian connections to neighbourhoods to increase alternative transportation routes and connections to the Downtown;
 - Beautification and public space upgrades; and
 - Parking improvements.
- Your support and patience are crucial during this time. Once the project is completed, our community will enjoy a vibrant, desirable and great public space that will attract more visitors to the downtown core. It will be worth the temporary mess and inconvenience!

Communications

- We are committed to keeping you informed throughout the project. Updated information related to the schedule and closures is available on our website: www.summerland.ca
- If you have any comments or concerns, please feel free to reach out to us through the contact listed on our website.

Key Elements of the Project

- Closure of Henry Ave between Main and Wharton to develop public washrooms, a plaza area, misting fountain, boulder seating, bench seating, a busking stage, café-style seating areas with integrated planting, and overhead lighting.
- Creation of the Memorial Park Plaza with unit pavers, upgraded cenotaph area, seating, power receptacles, lighting, flag poles, and a raised crosswalk to connect to the Henry Ave plaza.
- Upgrades to Wharton Street including additional angle parking, street trees and site furnishings, streetlighting, new concrete sidewalk on the north, vehicle access maintained, and a utility zone adjacent to private property, relocation of power lines to underground, including removal of the poles.
- Conversion of Kelly Ave to two-way traffic to improve traffic flow, provide connections for future cycling network expansions, parallel parking, and a new two metre wide sidewalk on the west side.
- Stormwater management improvements to accommodate surface and future development flows, utilizing green infrastructure where possible.
- Relocation of overhead power lines to underground to improve capacity and beautify the downtown area.

Funding

- The total cost of the project is approximately \$8 million. The project will be funded through various funding sources including DCC's, reserves, grants and debt.

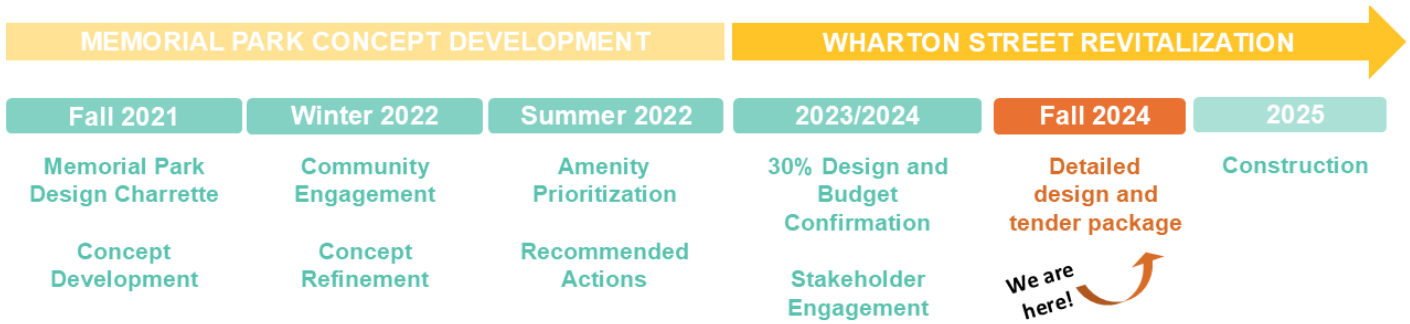
What to Expect During Construction

- There will be some disruptions in the downtown area during construction. While we will work hard to ensure disruptions are minimal, residents and business owners can expect:
 - Limited access to driveways and rear entryways to buildings
 - Increased noise and dust
 - Single lane alternating traffic and periodic roadway closures
 - Impacts to special events such as Tuesday Market, Car Shows, Action Fest, Wednesday Music in the Park, and the Sunday market on Main Street
- Residents can expect traffic interruptions during construction, including single lane alternating traffic and periodic roadway closures. Signage will be implemented to notify drivers of detours and direct traffic to alternate routes.
- There will be increased dust in the area during construction. The project team will be taking steps to mitigate the impacts of this through dust control measures.



Schedule

Construction is estimated to be completed in 2025, with potential for some electrical work to be completed in 2026 such as service connections and power pole removals.



WHARTON STREET REVITALIZATION SITE PLAN

