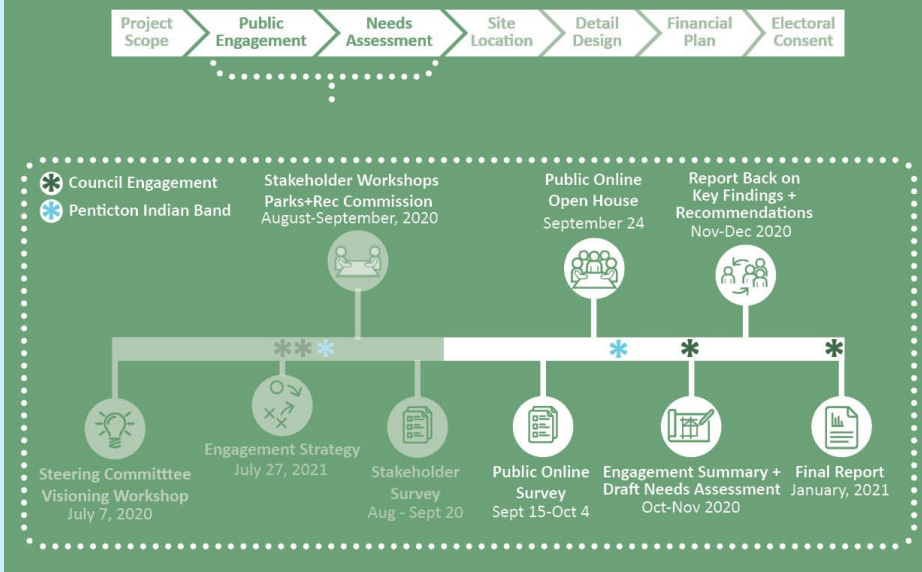


Summerland Community Recreation & Health Centre

The District of Summerland is planning for the replacement of the Aquatic & Fitness Centre and exploring the potential of the inclusion of a Primary Care Health Centre as part of Council's strategic priority projects. Planning a new recreation facility only happens every 40 to 50 years. Thank you Summerland for your input and ideas! The public online open house was held on September 24. The public survey that was available until October 4 had over 600 responses.

PROJECT TIMELINE:



The project will be undertaken over a series of phases and work back from October 2022, where the potential funding of this project will need to be determined – most likely through a Borrowing Bylaw that the District will require community approval for. Funding from other levels of government, including potential partners would also be identified as part of the process over the coming years.

As the graphic displays, we are currently in the Public Engagement and Needs Assessment phase of the project. A summary of community engagement and a Draft Needs Assessment will be completed in November.

If you would like to be added to the email list to receive project updates, please email recreation@summerland.ca.

Please visit www.summerland.ca/rec-and-health-centre for more information about the project.

Summerland Off-Leash Dog Park Update

The work continues to find a suitable location for a year-round fenced off-leash dog park in Summerland. In March 2020, Council recommended to further explore potential sites and collect feedback from community members and stakeholder groups. Living Memorial Park, Powell Beach Park and Summerland Rodeo Grounds are currently being reviewed.

Public Online Open House Q&A

- Thursday, October 22 at 4:00pm or 5:30pm
- Pre-register at www.summerland.ca/dog-park-project
- Consultant will present a project overview, gather community input, and facilitate questions and answers
- The community is welcome to submit questions in advance by emailing recreation@summerland.ca or during the Open House
- FAQs will be posted on the website after the Open House

Public Survey

- Available on the website October 23 - November 8

Please visit www.summerland.ca/dog-park-project for more information.

Child Care Survey

The District of Summerland, together with the RDOS, Village of Keremeos, Town of Princeton and Town of Oliver are asking local parents and guardians to share their child care experiences to help create a **Child Care Action Plan and Strategy** for the region.

The survey is part of a broader project that will help us learn more about child care needs, establish child care space targets and identify actions to meet those targets. The survey takes approximately 15 minutes to complete and is active until October 19, 2020. Please fill out the survey at <https://www.surveymonkey.com/r/XNPM2LW> or on the RDOS website www.rdos.bc.ca.



Grant in Aid Requests

Each year Council considers Grant in Aid requests from non-profit organizations that contribute to fulfilling basic needs and improving the quality of life of Summerland residents. If your organization is interested in applying for a 2021 Grant in Aid, please visit the Finance Department section of the District website at www.summerland.ca for the current application form and related policy. Complete submissions, with all requested supporting documentation, are due by **October 31, 2020**. Please forward all related information to recreation@summerland.ca.

District Facilities Update

Some District facilities have begun gradual re-opening plans. Call to check what hours facilities may be open to the public. Staff is available during regular business hours at the numbers below:

- Municipal Hall - General Enquiries: (250) 494-6451 Monday to Friday 8:30am - 4:00pm
- Development Services: (250) 494-1373

- Utility Billing: (250) 404-4047
- Property Tax/Accounts Receivable/Accounts Payable: (250) 404-4055
- Parks & Recreation: (250) 494-0447
- Fire Department (Non emergency): (250) 494-7211
- Works & Infrastructure: (250) 494-0431
- After Hours Emergency 3:30pm - 7:00am Monday to Friday, weekends or Statutory Holidays for Water/Sewer/Roads/Parks/Electrical Utility: (250) 493-0005

Summerland Aquatic & Fitness Centre

Phase 2 of Re-Opening (October 13 – December 19, 2020)

A big thank you to all patrons for following the new COVID-19 protocols that put safety first for our facility and community. Our phased re-opening plan has been a successful, smooth transition.

New for Phase 2:

- Aquatic Memberships & Health Club Memberships are now available (1, 3, 6-month and 1-year passes).
- Allowing up to 25 patrons for Public Swim, 12 for Lane Swim (2 per lane) and 12 for Fitness Centre sessions.
- Red Cross Swimming Lessons offered for all levels with new COVID-19 guidelines.

Pre-registration is required for all pool, Fitness Centre admissions or programs. Reserve your time slot at <https://summerland.perfectmind.com> or call in advance during office hours (250) 494-0447 Monday to Friday 8:00am – 7:00pm, Weekends 9:00am – 12:30pm. There is a 24-hour refund policy for cancellations.

View the Fall Recreation Guide at www.summerland.ca/recreation.

Email questions to recreation@summerland.ca.

Facility Hours: Monday to Friday 7:00am – 8:00pm, Weekends 9:00am – 5:00pm.



Sani-Station Closed for the Season

The Trout Creek Sani-Station will be closed as of Monday, November 9, 2020 for the season.

Open Burning Permits

Written open burning permits are issued by the Fire Department from October 15 to April 15 to properties in excess of two acres in size for the purpose of burning woody debris such as prunings.



Property owners with a written open burning permit are then required to obtain a verbal open burning permit on the day they wish to burn by calling the Fire Department at (250) 494-7211. Open burning days are regulated by regional ventilation index, issued by Environment Canada.

Burning of yard waste in residential areas, on properties less than two acres in size is strictly prohibited.

College Road Seasonal Closure

College Road will be closed to vehicular traffic from October 31, 2020 to April 15, 2021.

Happy Thanksgiving!



Municipal Hall, District Offices, the Landfill, the Summerland Arena and the Aquatic & Fitness Centre will be closed on Monday, October 12 for Thanksgiving. For water, sewer, roads, parks or electrical utility emergencies call the after hours line at (250) 493-0005. Council will hold a Regular Council meeting on Tuesday, October 13.

Keep Up To Date: The District will post community updates to our website, Facebook and Twitter Accounts. Please follow our pages to keep up to date on COVID-19 information and more.

Website: summerland.ca

Facebook: facebook.com/SummerlandBC

Twitter: twitter.com/SummerlandBC

Sign Up for our Online Newsletter:

<https://www.summerland.ca/your-city-hall/newsletter-subscribe>

Welcome New Director of Development Services

Starting October 13, Brad Dollevoet is the new Director of Development Services with the District. Brad will be responsible for leading the Planning, Building, Development Engineering, Business Licence and Bylaw Services departments. Brad is a Summerland resident who was previously the General Manager of Development Services with the Regional District of Okanagan Similkameen and before that, Director, Planning and Community Development with the Town of Rocky Mountain House. His background and experience leading the delivery of outstanding customer service within the range of Development Services functions, experience in the economic development field and contribution to previous downtown revitalization efforts are a great fit for our organization and community.



Landfill High Voltage Wildlife Fence

The District of Summerland has installed a high voltage wildlife fence around the Summerland Sanitary Landfill to meet regulations, prevent wildlife from entering the landfill and becoming habituated to human waste, and to protect landfill staff and users. For your own safety do not touch the Summerland Sanitary Landfill perimeter fencing.



Celebrating Giant's Head Mountain Park Upgrades

The first two phases of trail upgrades have been completed in Giant's Head Mountain Park. The total cost of the project is close to \$800,000 and includes federal gas tax funds of \$200,000, provincial Rural Dividend funding of \$445,000 and the Rotary Club of Summerland contributed over \$100,000 to the project. Phases 1 & 2 included upgrading 5.4 kms of trails, building 2.2 kms of new trails, decommissioning trails for erosion control and environmental protection, adding new guard rails, improving the park entrance, road pullouts and reinstalling viewing tubes and trail signage.

From left is Councillor Doug Holmes, Lisa Jaeger of the Summerland Rotary Club, Linda Van Alphen, MP Dan Albas, MLA Dan Ashton, Mayor Toni Boot, Ellen Walker-Matthews, Tom Matthews and Councillor Marty Van Alphen.



Fall is the Best Time of the Year to Use Compost

Did you know you can purchase high quality, sustainable, and safe Class A biosolid compost at the Summerland Sanitary Landfill?

Biosolid compost is valued for its high organic matter content and strong structure that drains easily and promotes healthy root growth. The Class A government designation means that the product can be sold with no restrictions. It can be safely applied to lawns, flowers, shrubs and gardens.

Applying District of Summerland Compost in the fall will prepare your yard for next year – replenishing the nutrients lost during the growing season!

- Restore Lawns;
- Overwinter Trees and Shrubs;
- Plant Fall Bulbs and Tubers;
- Re-nourish Spent Gardens.



Visit www.summerland.ca/solidwaste, Green/Organic Waste & Compost-Fall for more information on how to apply the District of Summerland Compost. District of Summerland Compost is available for purchase from the Summerland Landfill. Please bring your own containers/bags and shovel for small quantities or we can load trucks and trailers Monday to Friday from 9:00am-2:45pm, with a closure between 12:00-12:30pm.

A loader will be available Saturday, October 17 from 9:00am-12:00pm, 12:30-2:45pm for filling trucks and trailers.