



# WELCOME

The purpose of today's public event is to:

- Provide an update on the process to develop the Cycling, Trails and Sidewalks Master Plans
- Present and get your input on the draft long-term plans
- Get your input on how the plans should be prioritized and implemented

Based on the input received through today's event and the survey feedback, we will finalize long-term plans and develop implementation plans with short, medium, and long-term priorities for cycling, sidewalks and trails in Summerland.



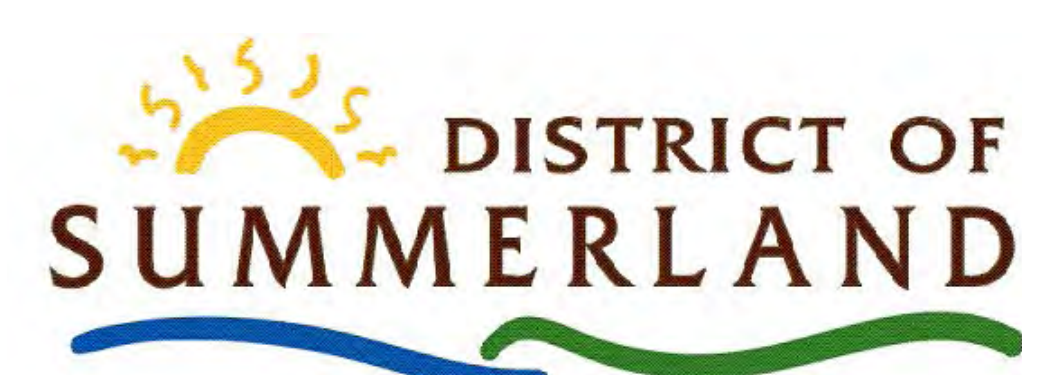
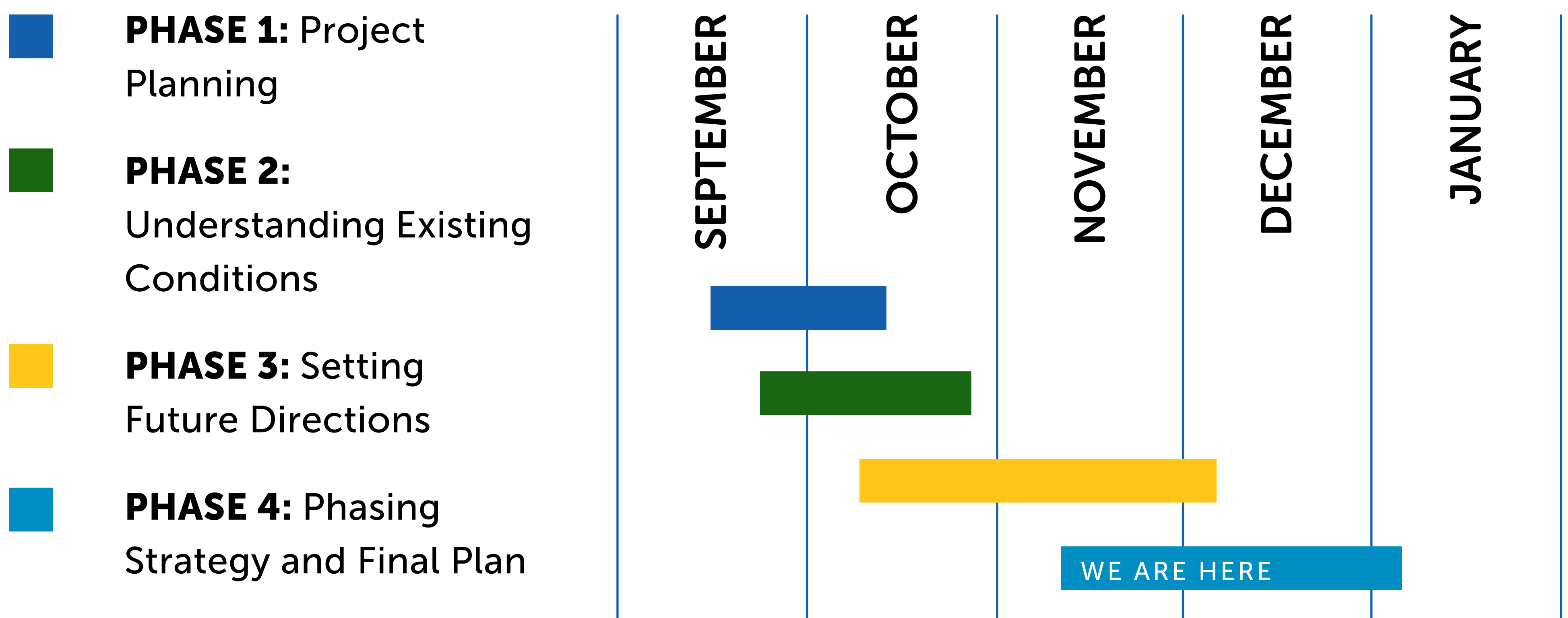


# PROJECT PROCESS

The District of Summerland is developing three concurrent Master Plans for cycling, trails and sidewalks to identify infrastructure projects, policies and procedures to enhance cycling, trail and sidewalk facilities within the District.

## THE PLANNING PROCESS

At the end of the planning process, the District will have three implementable action plans that will guide investments in cycling, trails and sidewalk infrastructure and support programs to help make active mobility options safe, convenient, and attractive transportation and recreation choices for residents of all ages and abilities.







# WHY ARE WE DEVELOPING THESE PLANS?

- Transportation decisions affect our community's health, environment, and economy.
- The Plans will identify opportunities for the District to reduce greenhouse gas emissions and work towards a more sustainable transportation system that reduces traffic congestion and encourages residents and visitors to choose active modes of transportation.
- The Plans will improve walking, cycling and other forms of active transportation for both commuting and recreational purposes.
- The Plans will guide the development of future trails, cycling routes and sidewalks.
- The Plans will include an implementation plan to prioritize new projects and policy changes.








# VISION & GOALS

## PROPOSED VISION FOR THE CYCLING, TRAILS AND SIDEWALK MASTER PLANS

Summerland is committed to encouraging active and healthy living and ensuring walking, cycling, and other forms of active transportation are safe and comfortable for people of all ages and abilities, year-round, and for all trip purposes, including recreation and commuting.

## GOALS FOR THE CYCLING, TRAILS AND SIDEWALK MASTER PLANS

	 <b>CYCLING</b>	 <b>TRAILS</b>	 <b>SIDEWALKS</b>
<b>USE</b>	The cycling network is well connected and makes commuter and recreational cycling a convenient and viable way to travel.	The trail network encourages walking, cycling, and other outdoor activities for commuter and recreational purposes in appropriate locations that are integrated with on-street facilities and regional trails.	The sidewalk network encourages walking for every day trips for recreation and to schools, community centres and other major destinations in the District.
<b>SAFETY AND ACCESSABILITY</b>	The cycling network is safe, well maintained and comfortable for people of all ages and abilities.	The trail network includes a range of facilities targeted at different user groups and provides clear direction on appropriate uses and etiquette for each trail.	Sidewalks are provided to ensure safe and accessible connections to key destinations for people of all ages and abilities.
<b>INFRASTRUCTURE</b>	The cycling network consists of bicycle facilities that combine on-street and off-street routes that connect to District neighbourhoods and nearby communities.	Trails will be developed to a higher quality for residents and visitors showcasing Summerland's unique landscape and biodiversity. Trails will be developed to minimize impact on Summerland's natural environment.	The District has a complete sidewalk network on major roads in urban areas, and shoulders in rural areas.





# WHAT WE'VE HEARD

An interactive online survey was used to collect existing conditions information on cycling, sidewalks and trails in Summerland. We heard from over 400 respondents!

When survey respondents were asked how often they walk or bicycle on District cycling facilities, sidewalks and trails, 84% of survey respondents indicated they walk or bike at least weekly when it is sunny and mild and 71% when it is rainy or cold.

The majority of survey respondents are using the District's cycling facilities, sidewalks, and trails for recreational purposes.

The identified opportunities for improving cycling, sidewalks and trails in the community, the following are the top results.



## OPPORTUNITIES FOR IMPROVING CYCLING

- more on-street bicycle facilities (41%)
- fewer gaps in the bicycle network (13%)
- ensuring bike routes are properly maintained (15%)

15%



## OPPORTUNITIES FOR IMPROVING TRAILS

- build more unpaved trails (19%)
- fill in gaps between trails and more signage (14% each)
- Provide more maps/ route information (16%)

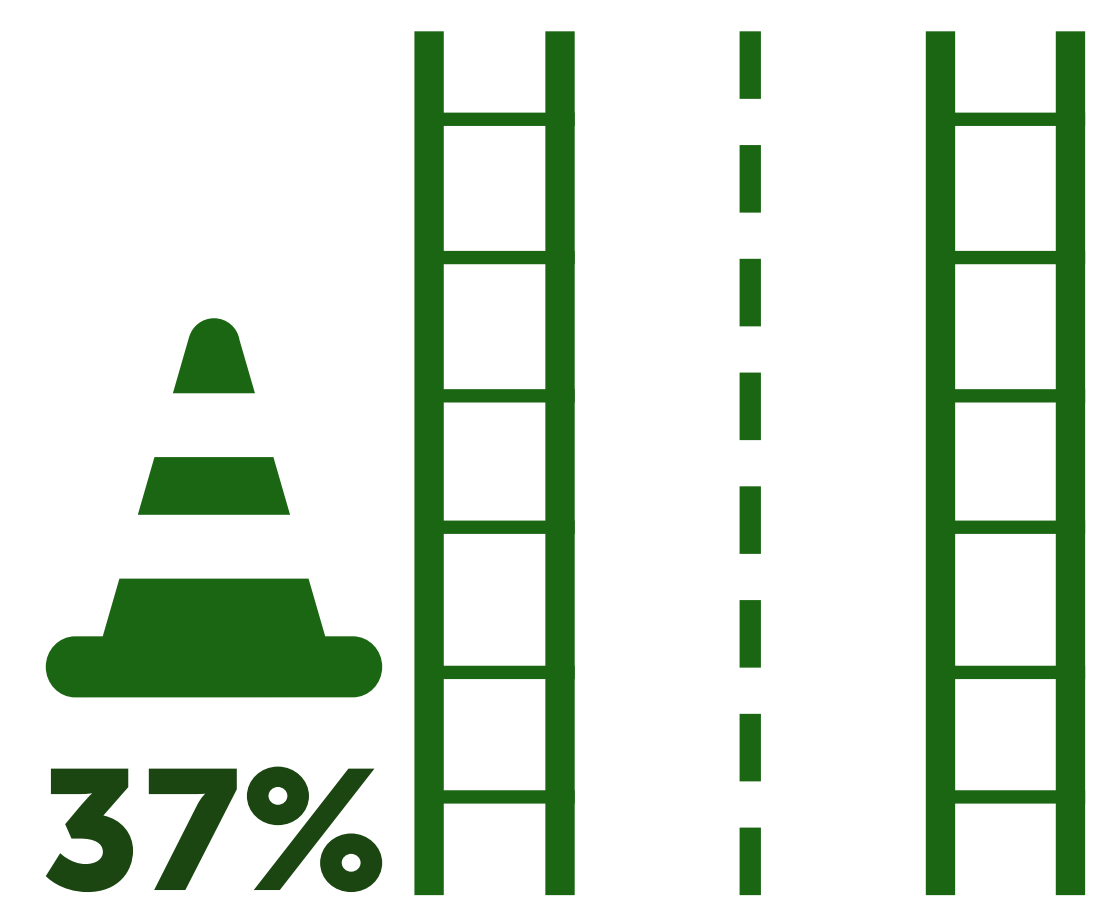
16%



## OPPORTUNITIES FOR IMPROVING SIDEWALKS

- build more sidewalks (37%)
- fill gaps in the sidewalks (33%)
- replace uneven sidewalks (15%)

37%







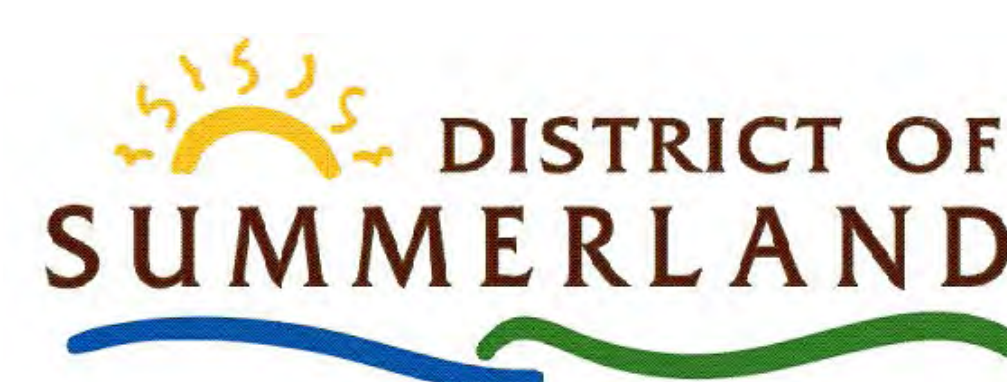
# CYCLING MASTER PLAN

## THE PURPOSE OF THE CYCLING MASTER PLAN IS TO:

- identify a bicycle network of facilities that are comfortable, safe and accessible for all residents and visitors.
- review and identify proposed bicycle connections to other communities within the Okanagan.
- identify policies and procedures for maintenance, end-of-trip bicycle facilities, and education and awareness.

The framework for the Cycling Master Plan consists of four themes that have been used to establish preliminary directions for cycling in Summerland. For each theme, action items have been developed to be implemented over the long-term.

- **THEME 1** Cycling Network
- **THEME 2** Maintenance and Accessibility
- **THEME 3** End-of-Trip Facilities and Amenities
- **THEME 4** Education and Awareness







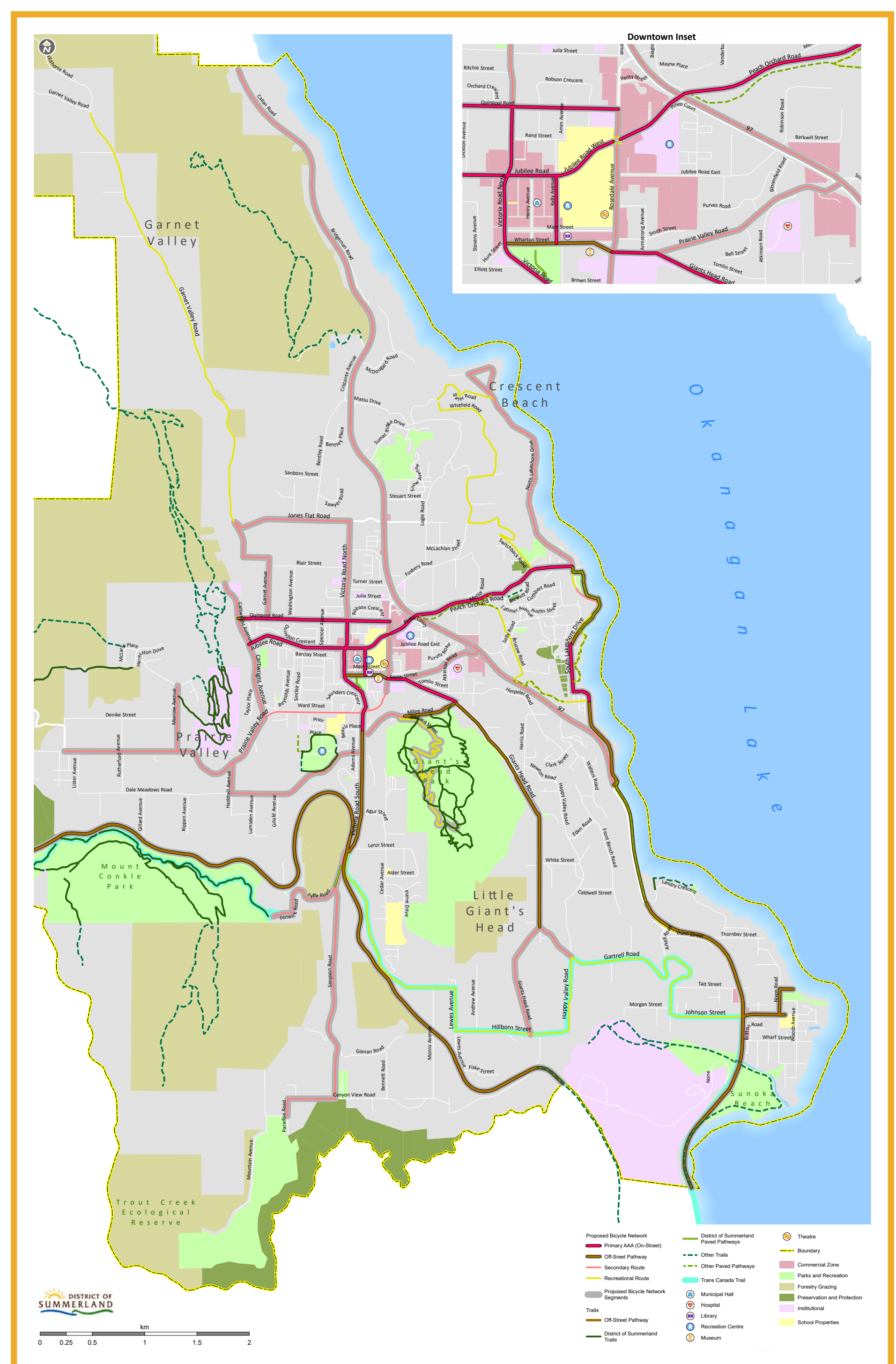
# CYCLING MASTER PLAN

## THEME 1: CYCLING NETWORK

To promote more cycling, the actions under this theme focus on expanding the network of cycling facilities and addressing existing barriers to provide an interconnected network of cycling routes. This will be done by installing new and upgrading existing bicycle facilities, based on best practice in infrastructure design.

- **ACTION 1.1** - Provide a complete and connected bicycle network
- **ACTION 1.2** - Work with partners to provide regional cycling connections to adjacent communities
- **ACTION 1.3** - Seek opportunities to implement bicycle infrastructure in conjunction with other capital projects, plans or developments
- **ACTION 1.4** - Incorporate the updated bicycle facility design guidelines into the Subdivision and Development Servicing Bylaw
- **ACTION 1.5** - Follow bicycle facility design guidelines and emerging best practices for all new bicycle infrastructure designs
- **ACTION 1.6** - Review cycling collision data and public feedback on a bi-annual basis to access cycling safety in the District.

PROPOSED CYCLING NETWORK MAP





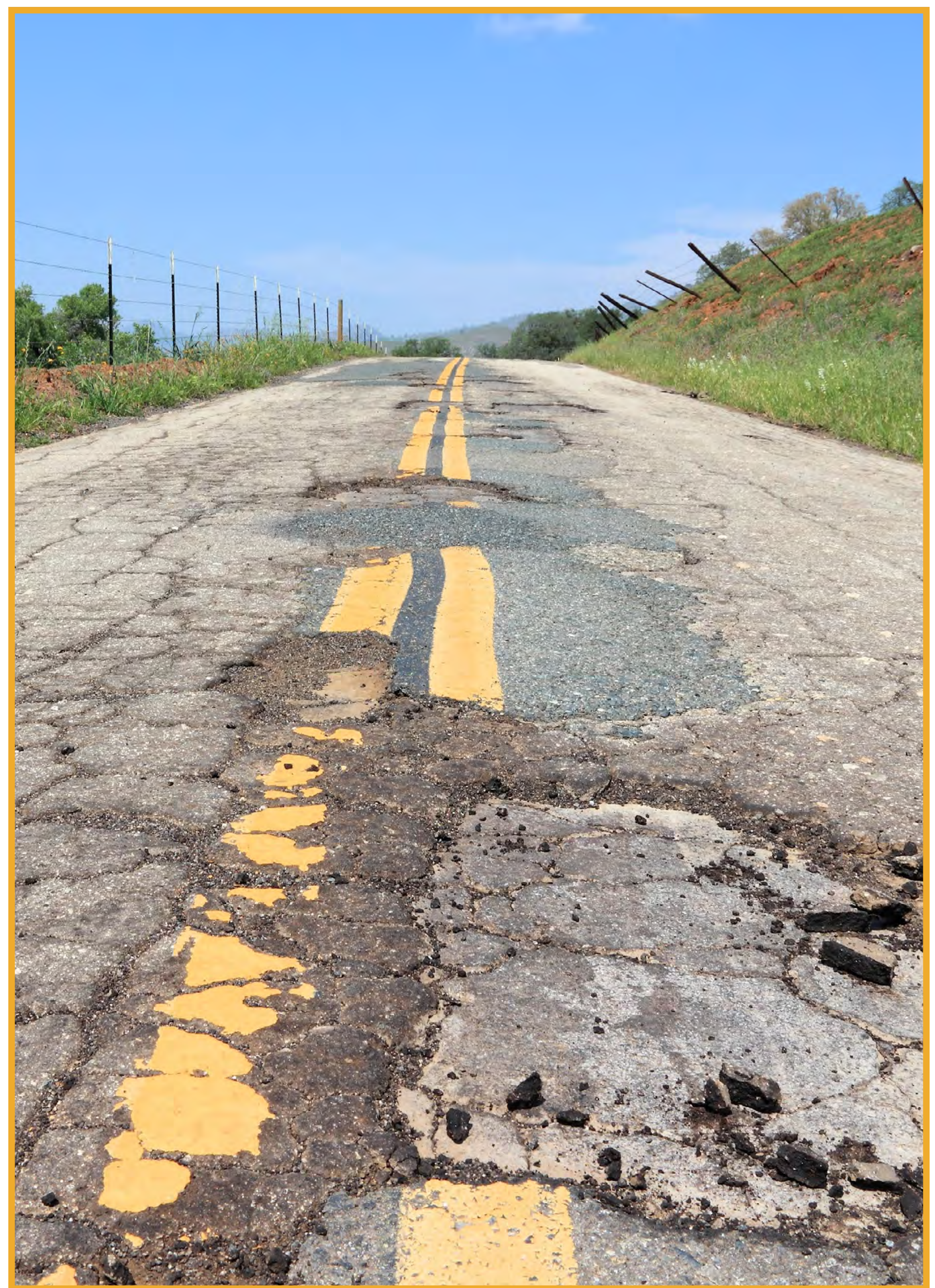


# CYCLING MASTER PLAN

## THEME 2: MAINTENANCE AND ACCESSIBILITY

The purpose of this theme is to support and encourage cycling the District by ensuring bikeways are in good condition and accessible year-round.

- **ACTION 2.1** - Update the District's Snow, Ice, and Rubbish Removal Bylaw to provide maintenance policies and procedures for bicycle facilities
- **ACTION 2.2** - Design bicycle routes to facilitate drainage, snow removal and snow storage
- **ACTION 2.3** - Ensure roads designated as bicycle routes are maintained in a state of good repair
- **ACTION 2.4** - Ensure the District has the equipment to maintain all types of proposed bicycle infrastructure





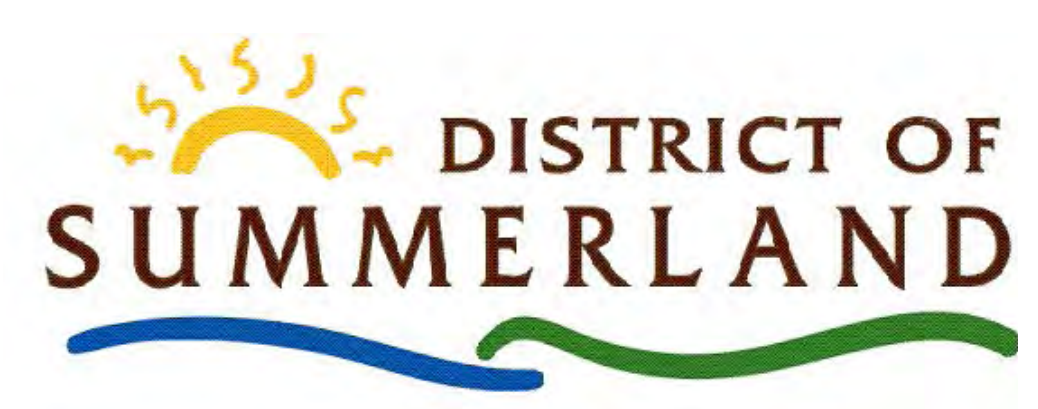


# CYCLING MASTER PLAN

## THEME 3: END OF TRIP FACILITIES AND AMENITIES

The District can help make cycling more convenient by better integrating cycling with transit and by providing amenities such as bicycle parking and end-of-trip facilities throughout the District.

- **ACTION 3.1** - Review and update requirements for short-term and long-term bicycle parking and end-of-trip facilities
- **ACTION 3.2** - Ensure adequate bicycle parking is provided at all District owned and operated facilities
- **ACTION 3.3** - Provide bicycle parking within the public right-of-way at key cycling destinations
- **ACTION 3.4** - Work with partners to consider the feasibility of developing an on-street bicycle corral program on commercial streets within the existing right of way
- **ACTION 3.5** - Develop a central hub for cycling with secure, weather protected bicycle parking and other amenities in the Town Centre
- **ACTION 3.6** - Work with BC Transit to identify opportunities to improve bicycle-transit integration throughout the day







# CYCLING MASTER PLAN

## THEME 4: EDUCATION & AWARENESS

Increasing awareness of cycling and educating residents about sharing the road can help encourage people to bike more and create safer roads for all.

- **ACTION 4.1** - Develop and implement a cycling wayfinding plan based on best practices
- **ACTION 4.2** - Develop an online cycling network map showing local routes, regional connections, and signed recreational routes
- **ACTION 4.3** - Consider the impact of changing technologies and different users on the cycling network
- **ACTION 4.4** - Continue to support and develop cycling education programs
- **ACTION 4.5** - Continue to actively market and promote active transportation through various forms of media
- **ACTION 4.6** - Consider the development of an Active Transportation Advisory Committee







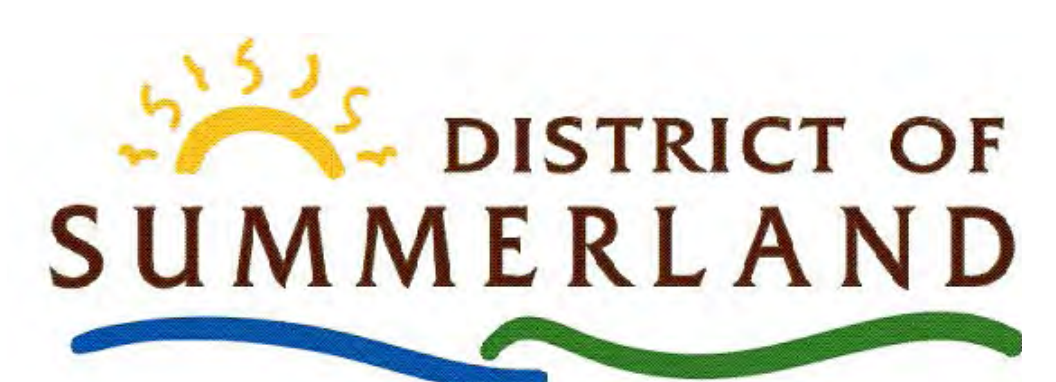
# SIDEWALK MASTER PLAN

## THE PURPOSE OF THE SIDEWALK MASTER PLAN IS TO:

- identify new sidewalk connections to fill in missing links in the network and enhance connections between neighbourhoods, parks, open spaces and community amenities.
- identify policies and procedures for ensuring sidewalks are well maintained and safe.

The framework for the Sidewalk Master Plan consists of three themes that have been used to establish preliminary directions for sidewalks in Summerland. For each theme, action items have been developed to be implemented over the long-term.

- **THEME 1** Sidewalk Network
- **THEME 2** Maintenance and Accessibility
- **THEME 3** Development and Growth







# SIDEWALK MASTER PLAN

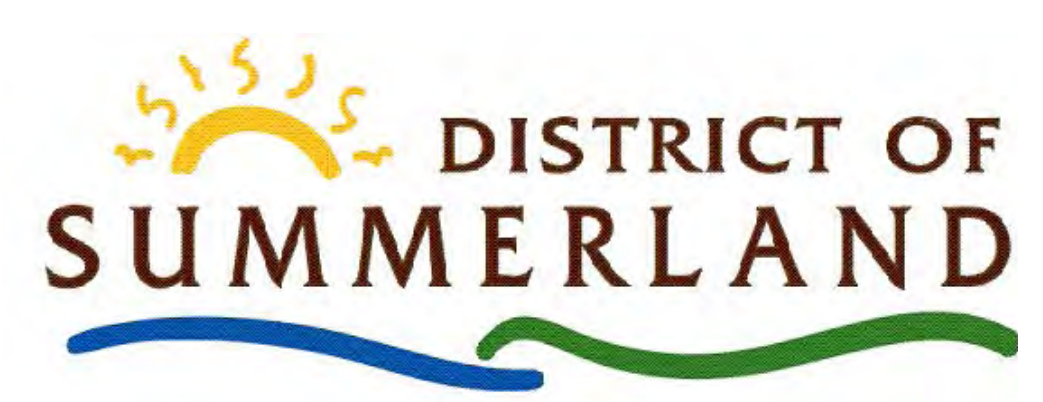
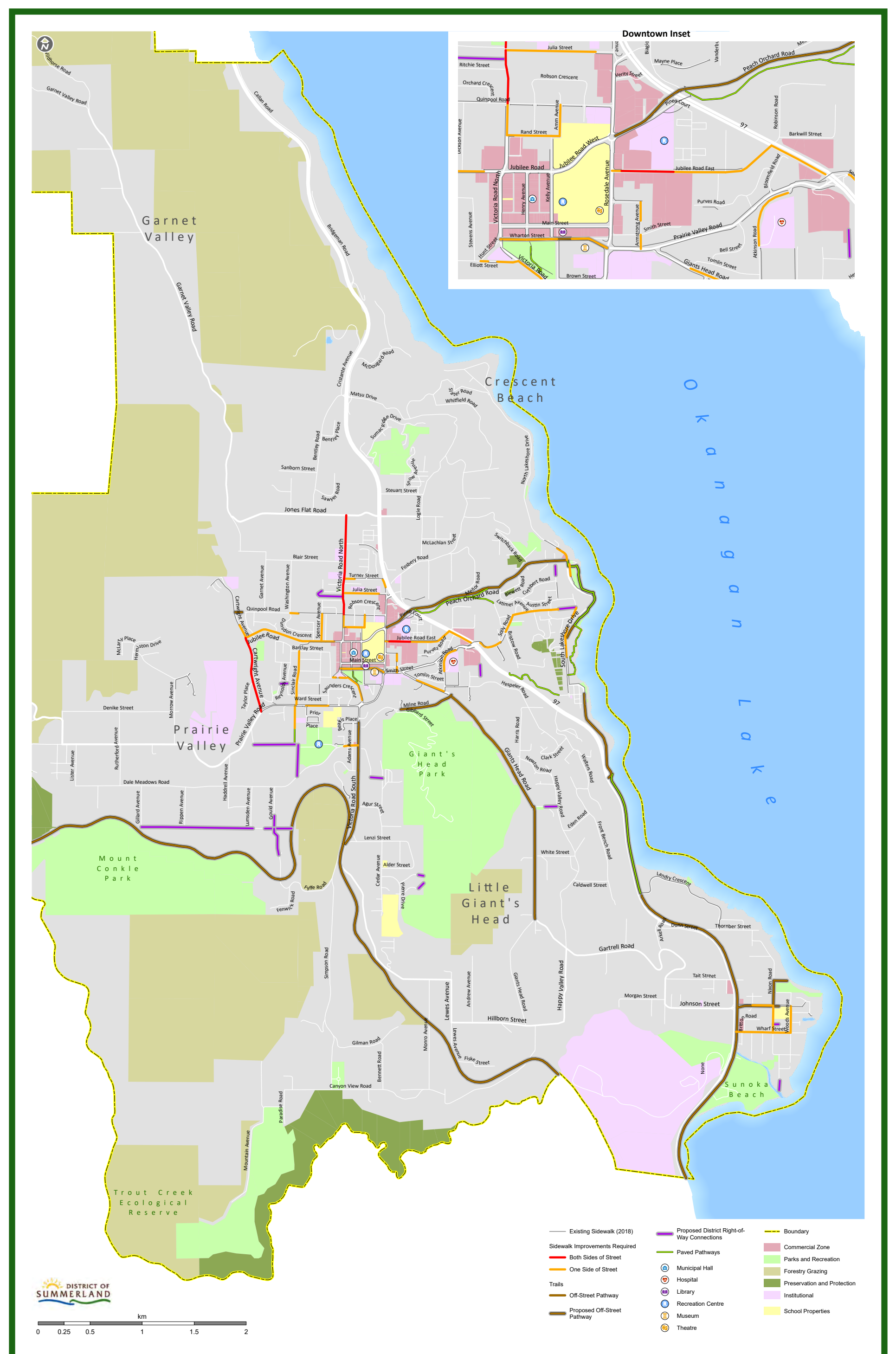
## THEME 1: SIDEWALK NETWORK

To better facilitate walking, actions under this theme focus on expanding the presence of sidewalks in the District by filling in gaps in the network and providing connections to key destinations

- **ACTION 1.1** - Develop a complete sidewalk network throughout the Town Centre and to other major pedestrian destinations
- **ACTION 1.2** - Develop and follow a program for prioritizing new sidewalks
- **ACTION 1.3** – Ensure the sidewalk network is seamlessly integrated with the trails network and cycling network



PROPOSED SIDEWALK NETWORK MAP







# SIDEWALK MASTER PLAN

## THEME 2: MAINTENANCE AND ACCESSIBILITY

The actions identified under this theme focus on supporting and encouraging walking in Summerland by ensuring sidewalks are in good condition and accessible year-round.

- **ACTION 2.1** - Develop and follow guidelines for barrier-free and accessible sidewalks
- **ACTION 2.2** - Continue to inspect sidewalks regularly to ensure they are well maintained
- **ACTION 2.3** – Develop and follow a program for prioritizing upgrades or the replacement of sidewalks

## THEME 3: DEVELOPMENT AND GROWTH

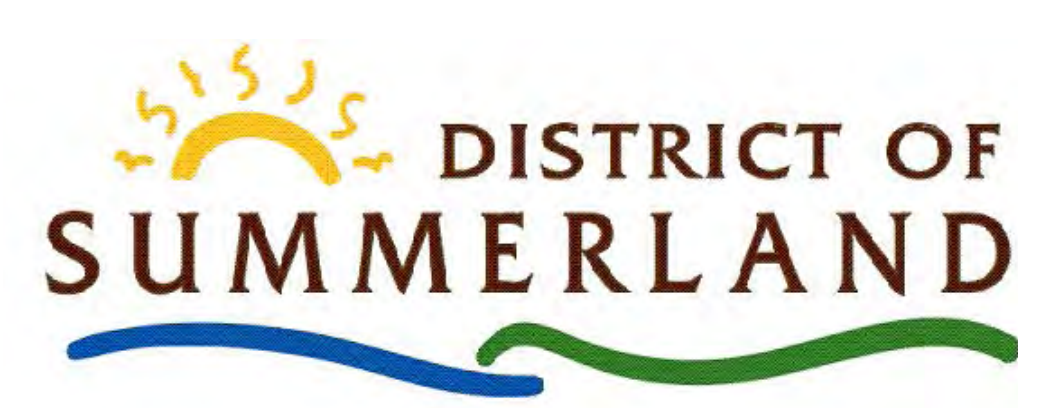
The actions identified under Development and Growth focus on ensuring sidewalks are considered in existing neighbourhoods and when planning new developments.

- **ACTION 3.1** - Incorporate updated sidewalk requirements into the Subdivision and Development Servicing Bylaw
- **ACTION 3.2** - Develop a process to address gaps in the sidewalk network when new developments occur

LOCATION	Arterial		Collector		Local	
	# of Sides	Min. Width	# of Sides	Min. Width	# of Sides	Min. Width
Within Downtown Core / Urban Growth Areas	2	2 m**	2	1.8 m**	2	1.8 m
Rural	1*	1.8 m*	1	1.8 m	Paved shoulder	

\*3m Multi-Use Pathway may be installed instead of a sidewalk

\*\* Boulevard is preferred wherever possible







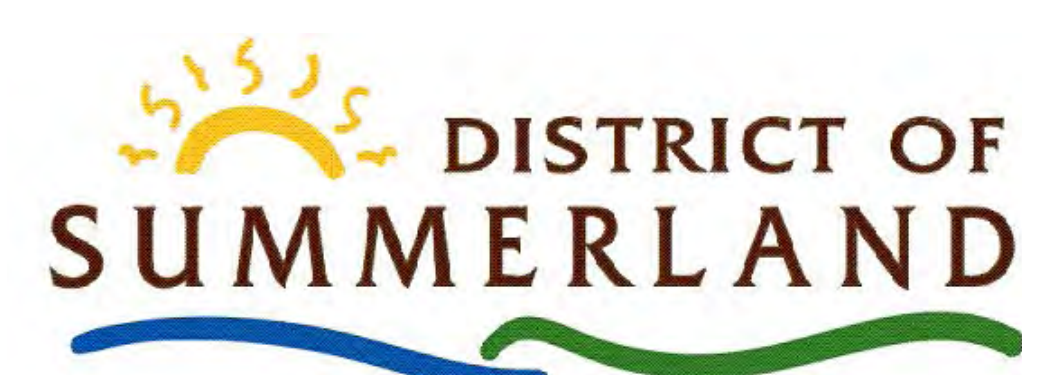
# TRAILS MASTER PLAN

## THE PURPOSE OF THE TRAILS MASTER PLAN IS TO:

- identify new trails within the District that connect neighbourhoods, parks, open spaces and community destinations to meet the needs of the community.
- identify new trail related amenities that can be installed to enhance the trail using experience.
- identify policies and procedures for maintenance, trail promotion, signage, enhancing safety and reducing the impact trails have on the natural environment.

The framework for the Trails Master Plan consists of six themes that have been used to establish preliminary directions for trails in Summerland. For each theme, action items have been developed to be implemented over the long-term.

- **THEME 1** Trails Network
- **THEME 2** Trail Recreation Management Strategy
- **THEME 3** Environmental Protection
- **THEME 4** Wayfinding and Amenities
- **THEME 5** Maintenance
- **THEME 6** Education and Awareness







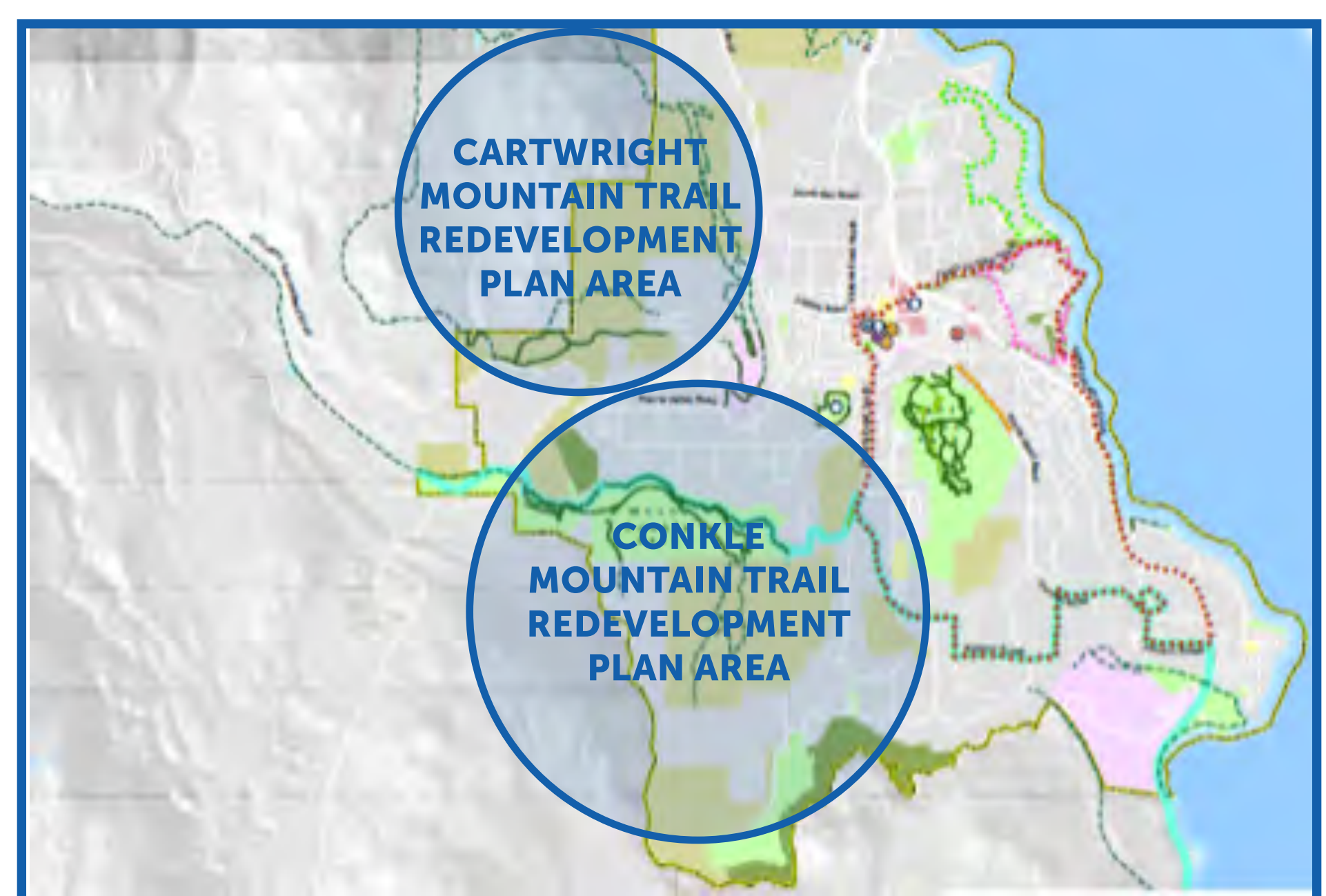
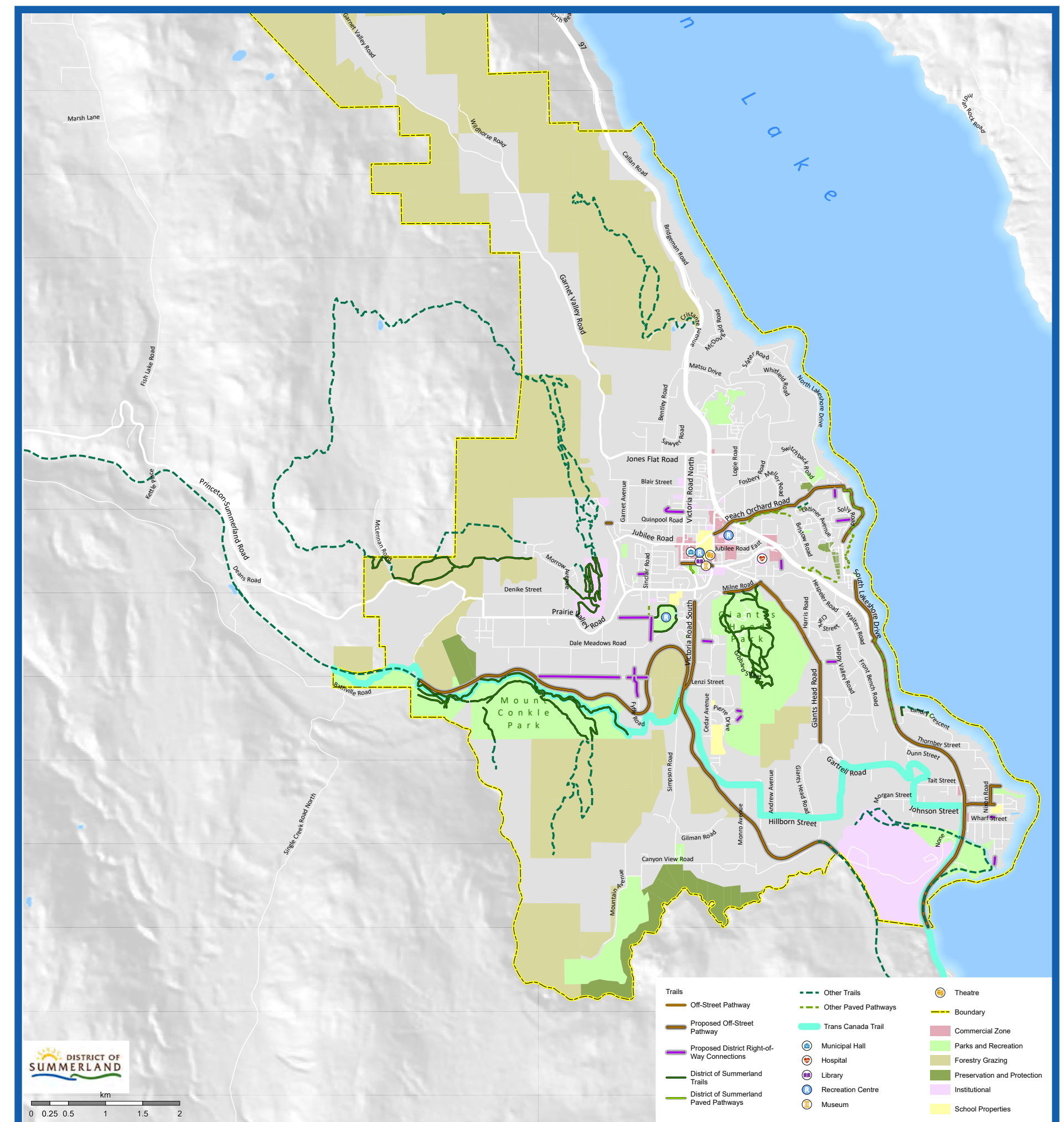
# TRAILS MASTER PLAN

## THEME 1: TRAILS NETWORK

The actions presented in this theme describe where new trails could be built, how trails can be decommissioned and how to build on the District's trail network by partnering with private and provincial land owners. This theme also provides information on the standards that will apply to trail building and strategies for how to maintain and monitor the network.

- **ACTION 1.1** - Identify new trails and trail networks and strategies to decommission trails
- **ACTION 1.2** - Ensure the trail network is well integrated with the sidewalk network and cycling network
- **ACTION 1.3** - Work with partners to provide regional trail connections to adjacent communities
- **ACTION 1.4** - Develop detailed Trails Re-Development Plans for Cartwright Mountain and Conkle Mountain
- **ACTION 1.5** - Develop and identify processes to support authorized trail building and address unauthorized trail building across multiple jurisdictions
- **ACTION 1.6** - Identify trail design standards for different users and activities
- **ACTION 1.7** - Maintain and regularly update an inventory of existing trails

PROPOSED TRAILS NETWORK MAP







# TRAILS MASTER PLAN

## THEME 2: TRAIL RECREATION MANAGEMENT STRATEGY

Collaboration between the District, user groups, landowners, environmental groups and other stakeholders will be important for improving and formalizing Summerland's trail network. This theme describes actions that would support this collaborative process.

- **ACTION 2.1** - Work with neighbouring landowners, stakeholders, and volunteer groups to identify roles and involved parties for the development of a Trail Recreation Management Strategy
- **ACTION 2.2** - Identify possible structures for Trail Recreation Management Organization

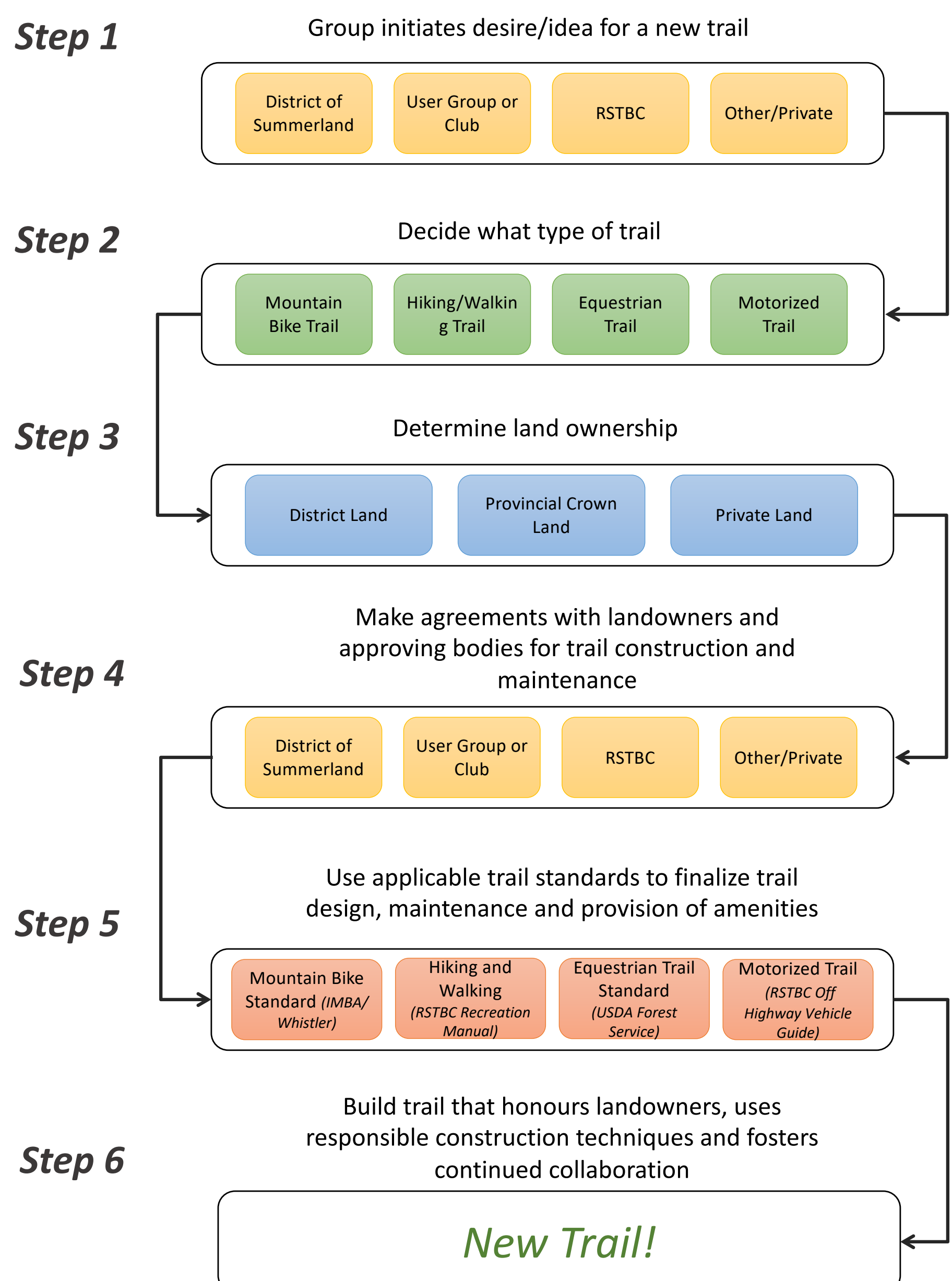


## THEME 3: ENVIRONMENTAL PROTECTION

The South Okanagan has some of Canada's most diverse and fragile ecosystems. This theme speaks to the importance of environmental oversight when constructing new trails and maintaining existing ones.

- **ACTION 3.1** - Work with partners to develop a process to plan and manage access to trails through environmentally sensitive areas

Process to Create New Trails with Variable Landownership





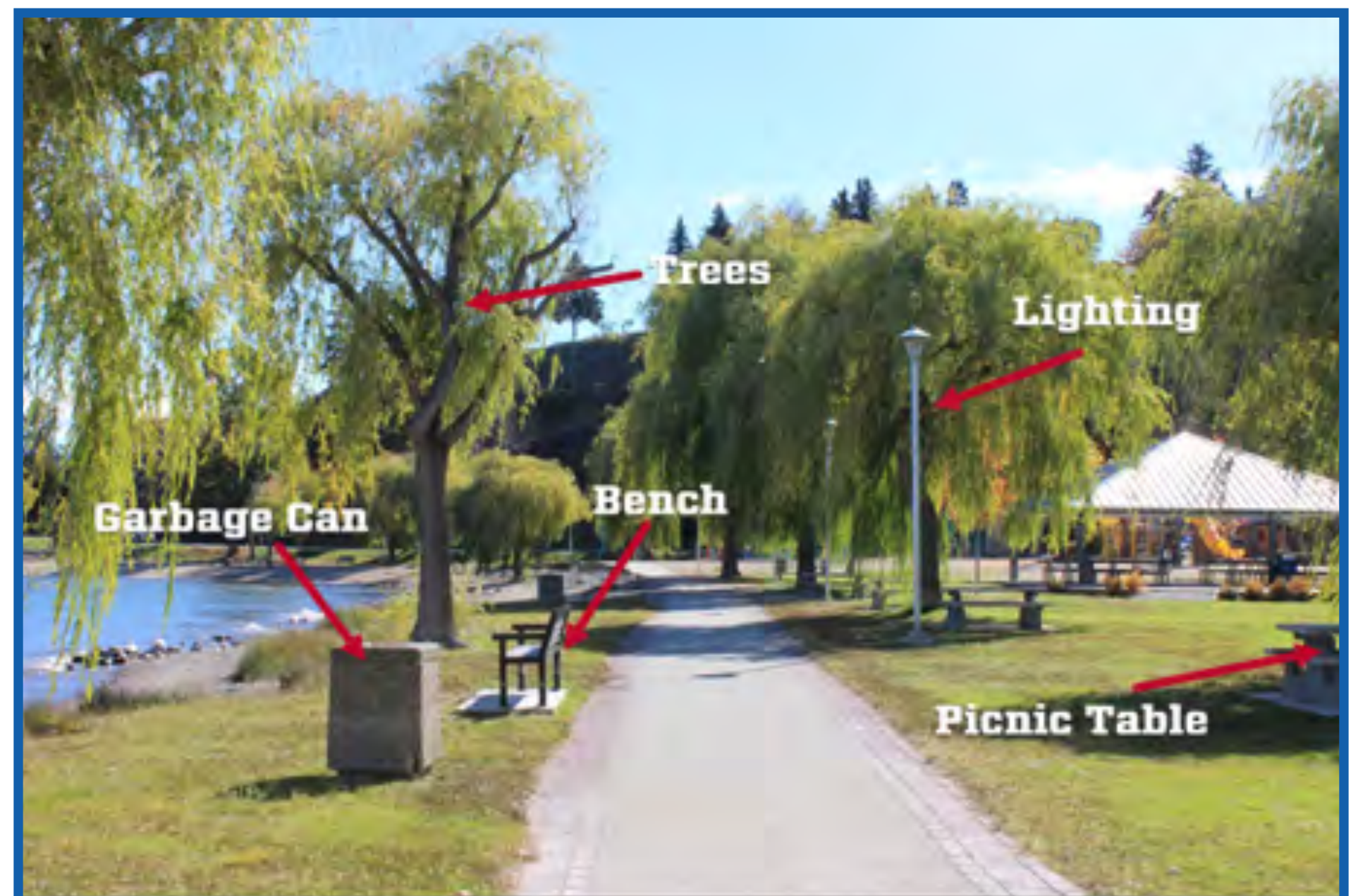


# TRAILS MASTER PLAN

## THEME 4: WAYFINDING AND AMENITIES

Trail users in Summerland area are diverse with different needs. This theme presents actions that identify and support the development of improved wayfinding programs and providing amenities on trails.

- **ACTION 4.1** - Develop and implement trail wayfinding guidelines
- **ACTION 4.2** - Develop a hierarchy for trail amenities and information along with trail amenity standards
- **ACTION 4.3** - Develop staging areas for users where applicable
- **ACTION 4.4** - Ensure parking considerations are identified at trailheads





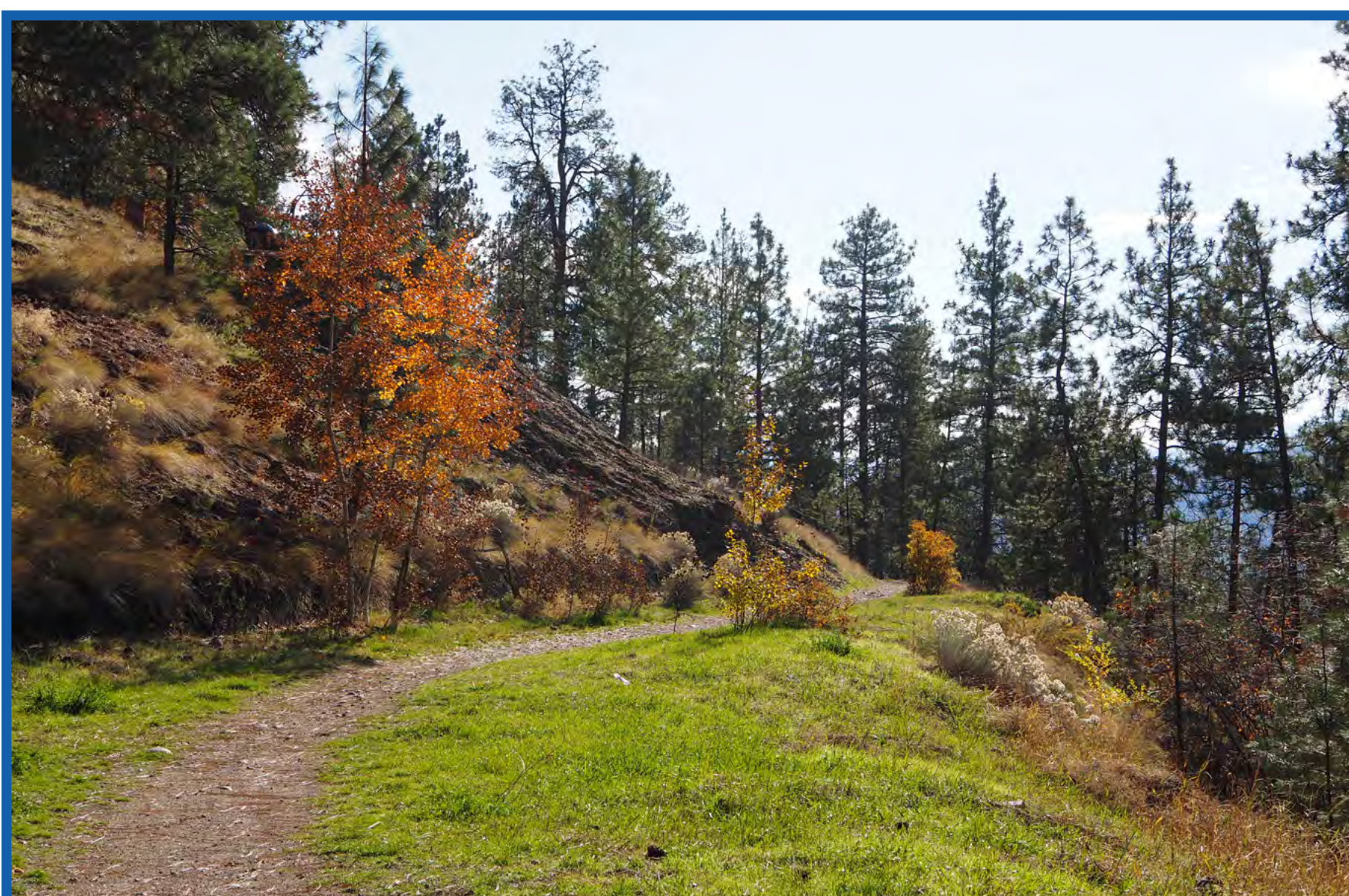
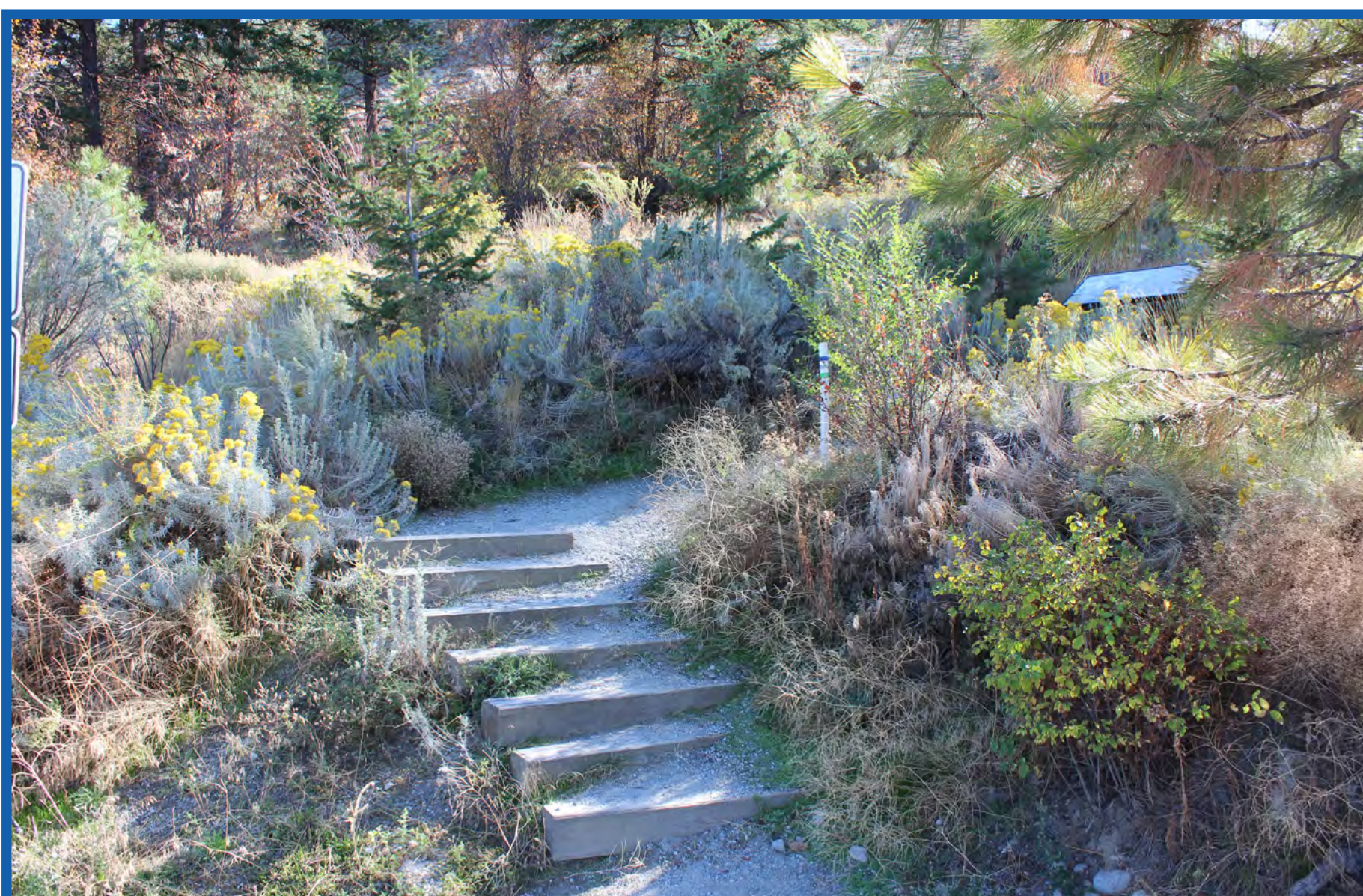


# TRAILS MASTER PLAN

## THEME 5: MAINTENANCE

This theme presents actions that support the inspection and maintenance of trails in the District. Maintenance and inspection activities will be collaborative, and efforts will be shared among user groups and stakeholders.

- **ACTION 5.1** - Develop and follow formalized maintenance policies and procedures for District trails
- **ACTION 5.2** - Inspect District trails regularly to ensure they are well maintained



## THEME 6: EDUCATION AND AWARENESS

The diversity of Summerland's trail system is one of its greatest strengths. The network is well loved by locals and attracts a wide range of visitors. The actions presented in this theme address how the trail network can be shared and promoted responsibly.

- **ACTION 6.1** - Develop signage and information that explains trail etiquette to manage conflicts between different user groups
- **ACTION 6.2** - Consider the impact of changing technologies and different users on the trail network
- **ACTION 6.3** - Continue to actively market and promote trails through various forms of media







# TRAILS MASTER PLAN

## **SOUTH OKANAGAN SIMILKAMEEN ONE OF CANADA'S MOST ENDANGERED NATURAL SYSTEMS**

60% of Okanagan region consists of ecosystems which are sensitive, rare or at risk.

### **1. BIOLOGICALLY DIVERSE, AND HOME TO ENDANGERED NATURAL SYSTEMS.**

- 67% of Summerland's land base contains ecosystems that are very important for conservation

### **2. AMONG THE GREATEST CONCENTRATIONS OF SPECIES AT RISK (SAR) IN CANADA.**

- 66% of BC's species at risk occur in the Okanagan, many here in Summerland.

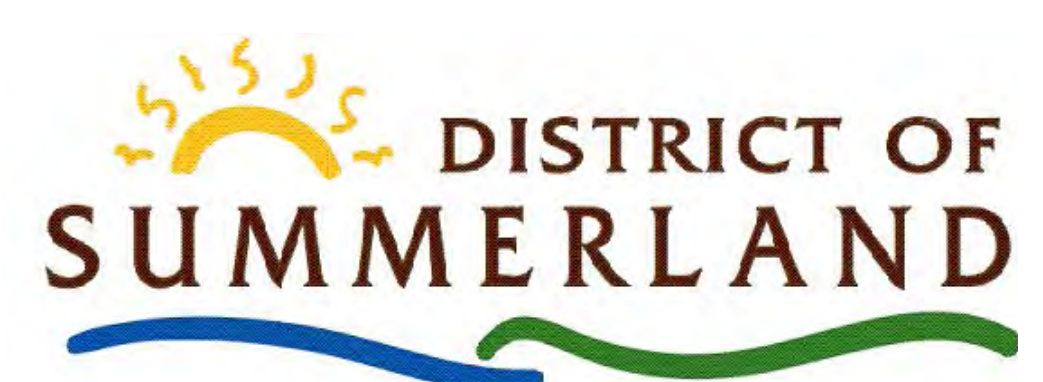
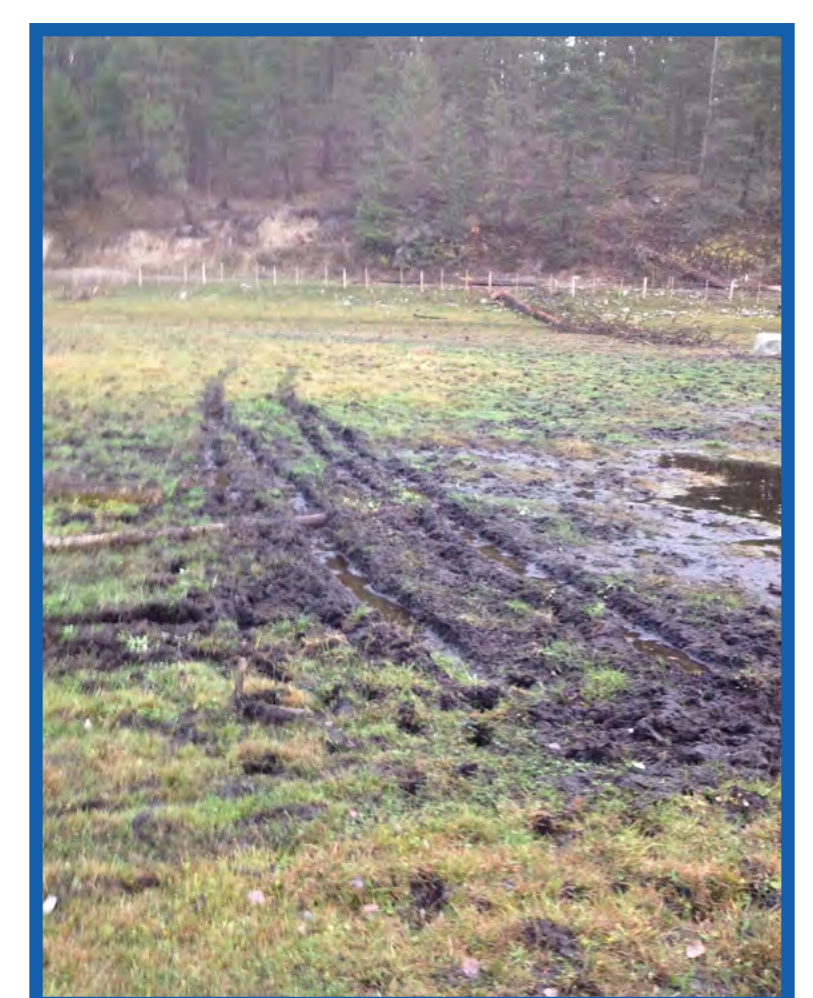
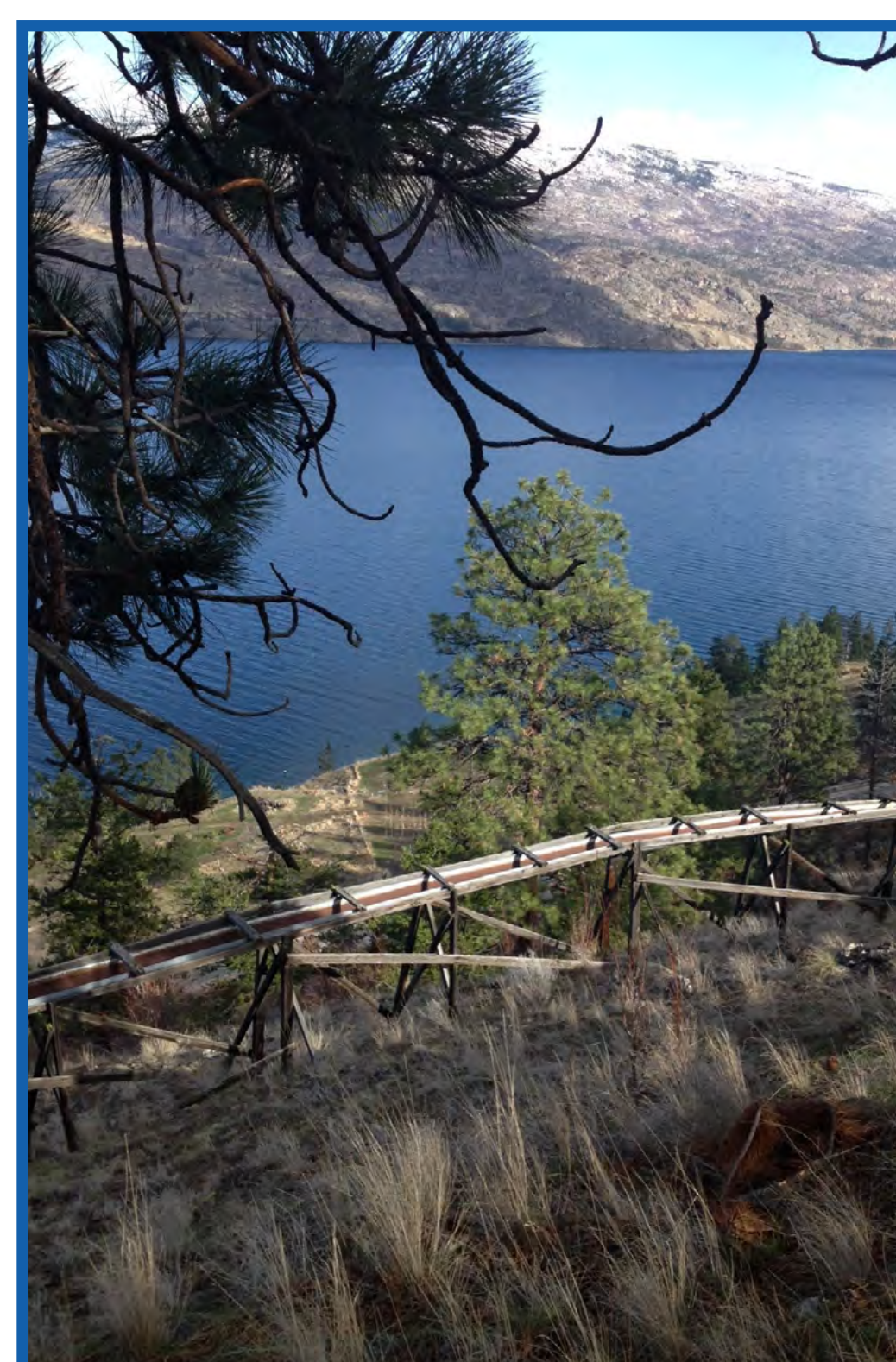
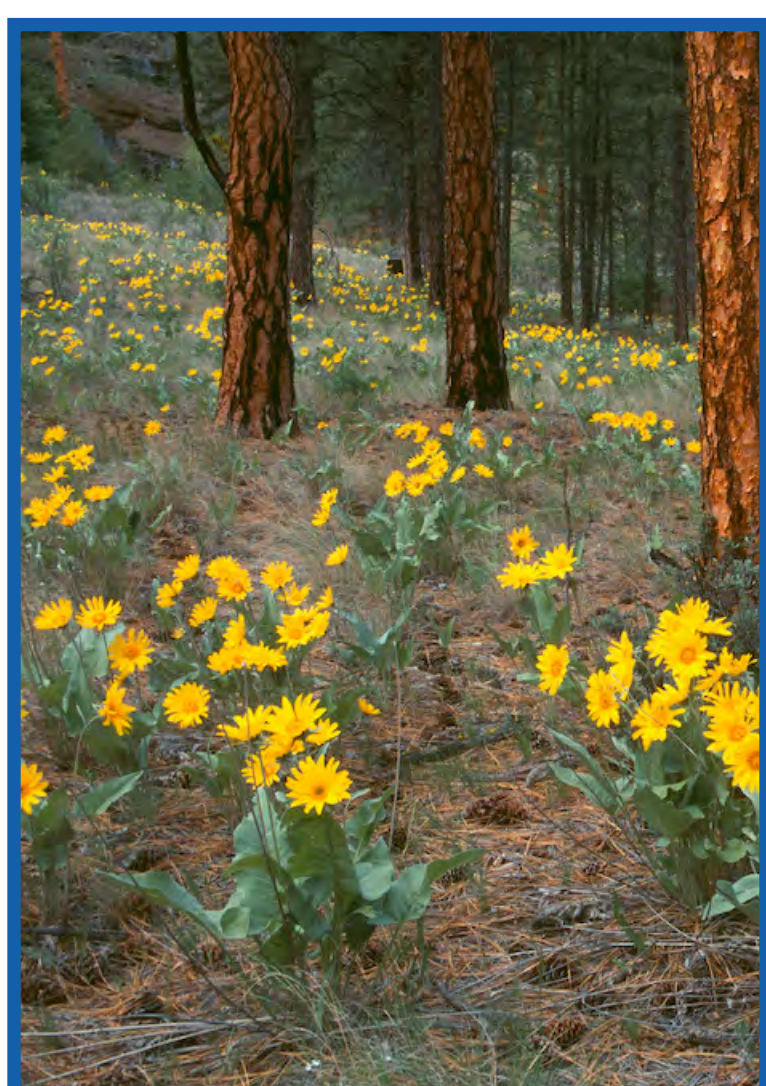
### **3. IMPORTANT CORRIDOR FOR WILDLIFE MOVEMENT.**

- Summerland is part of a large ecological corridor between arid US and interior grasslands of BC.
- Links between natural areas within the community support ecosystem services that sustain human and wildlife populations.

Population growth and accelerating development are putting pressure wildlife and natural areas

- Valued recreation areas often contain important ecosystems and wildlife habitat.
- If not planned and managed correctly, trail development and use can:
  - damage soils and cause erosion
  - spread weeds
  - disturb or harm wildlife
  - damage sensitive habitat
  - create barriers to species movement
  - fragment habitat.

*The South Okanagan Similkameen Conservation Program (SOSCP) is a partnership of 50 government and non-government organizations working together since 2001 to conserve biological diversity in this unique and at risk region of Canada. [www.soscp.org](http://www.soscp.org)*







# TRAILS MASTER PLAN

## SENSITIVE ECOSYSTEMS

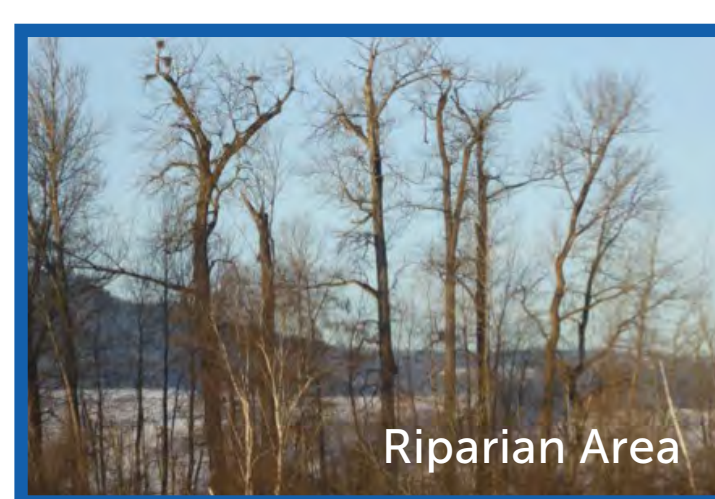
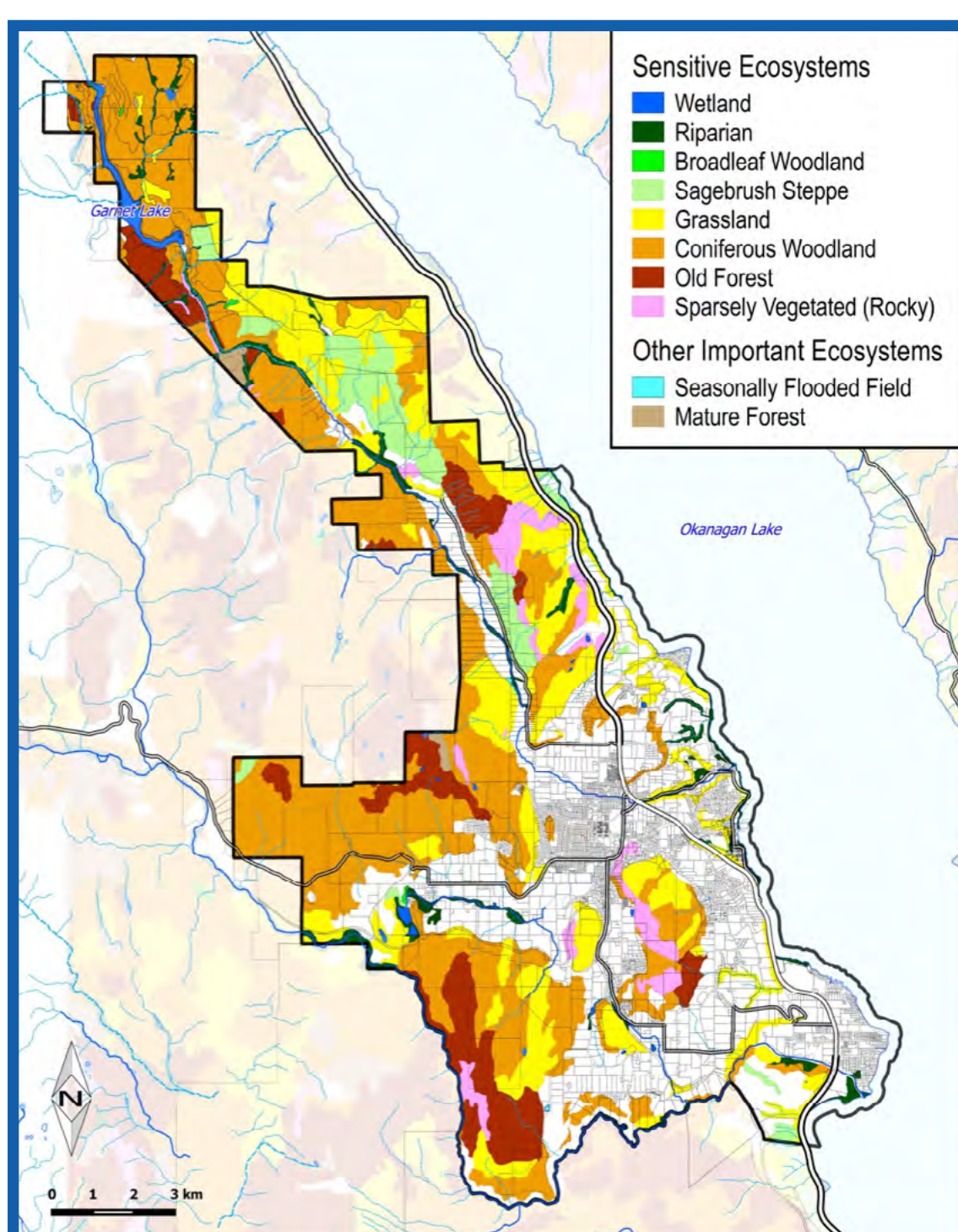
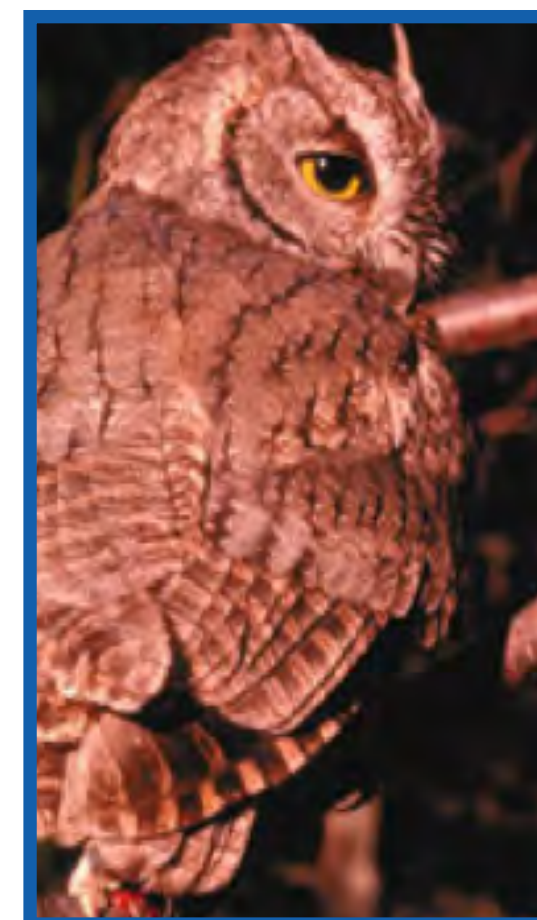
- **Sensitive ecosystems** = natural areas that are ecologically fragile:
  - Provide important **services** to communities – e.g. flood protection, erosion control, wildlife habitat.
  - Many have been **destroyed or degraded** by human activities.
- In District of Summerland:
  - **Wetlands**, including marshes, swamps and wet meadows
  - **Riparian areas** along streams, lake/wetland edges
  - **Broadleaf forests** = aspen copses
  - **Conifer woodlands** = open pine forest
  - **Mature and old forests** including ponderosa pine, Douglas-fir
  - **Grassland and shrub-steppe**
  - **Rock outcrops, talus and cliffs**

## SPECIES AT RISK (SAR)

### RARE OR ENDANGERED SPECIES AT RISK OF DISAPPEARING

District of Summerland contains:

- Large number of **Species at Risk** - wide array of plants, birds, amphibians, reptiles, mammals and invertebrates.
- Legally designated **Critical Habitat** for the survival or recovery of federally listed Species at Risk.
- **Important habitat** for common & regionally significant species, e.g. mule deer, mountain goats, black bears and others.



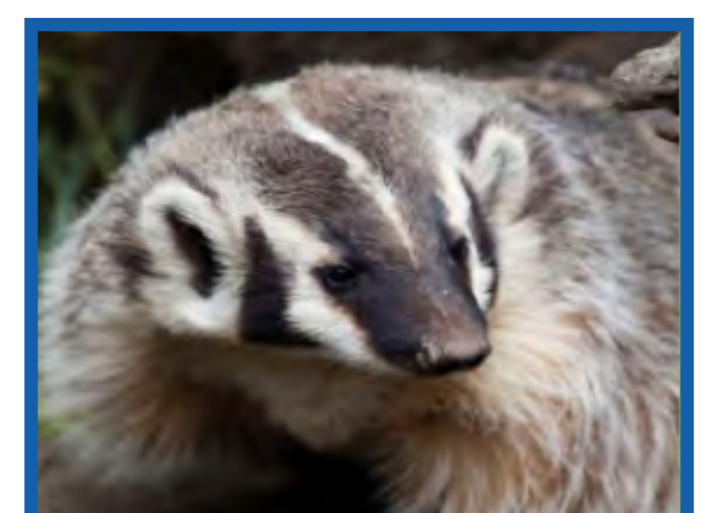
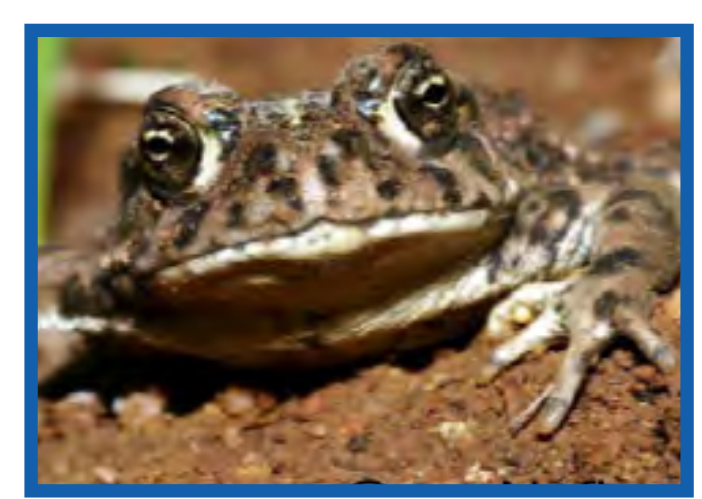
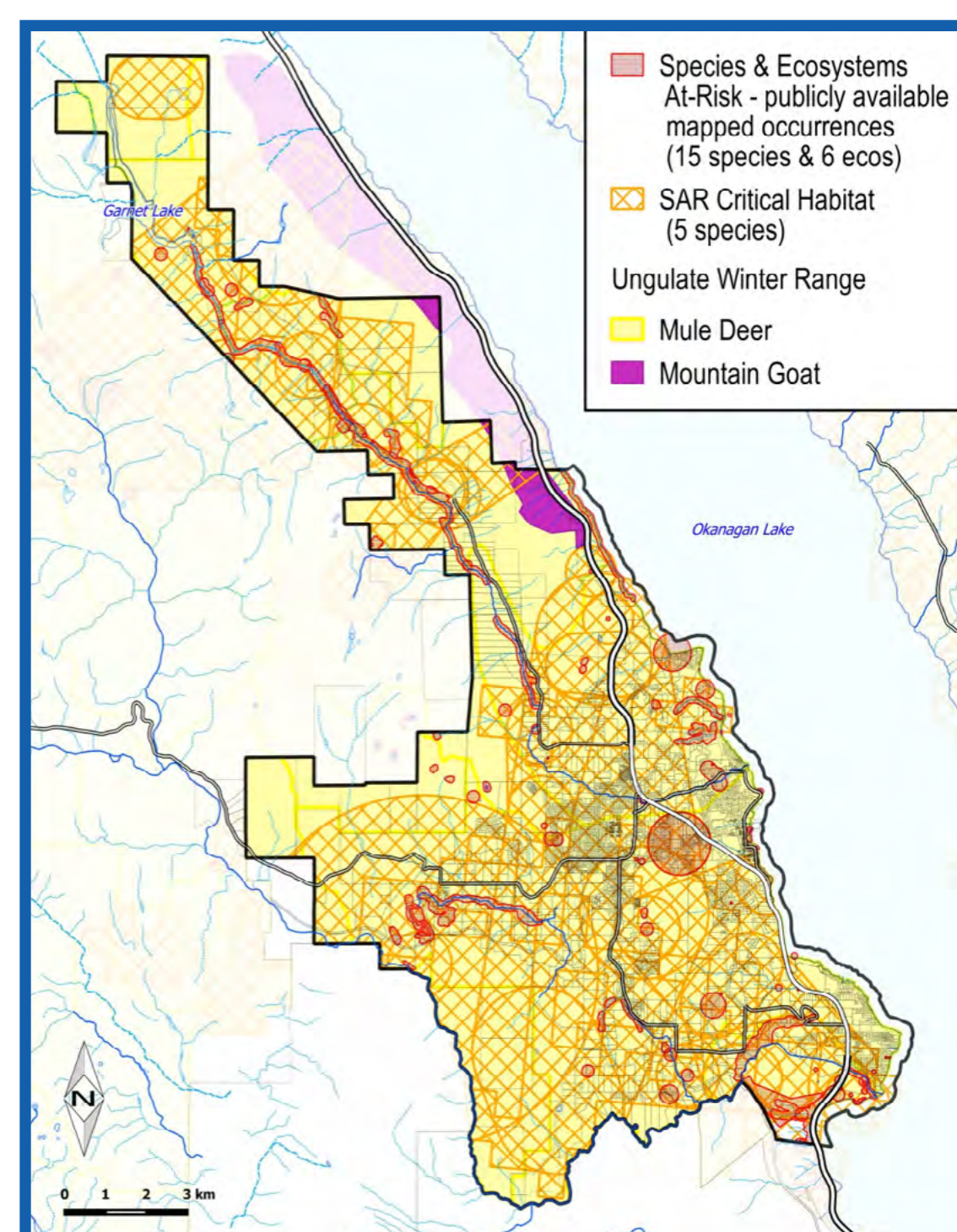
Riparian Area



Cliff



Coniferous Woodland







# THANK YOU!

Your comments and ideas are important for the development of the Cycling, Trails and Sidewalks Master Plans. This is your community, and it is important that these plans reflect the future that you envision!

## THE NEXT STEPS IN THE PROCESS ARE TO:

- Compile the research and community feedback we received from Phase 1 and 2 (including this open house)
- Prepare draft Cycling, Trails and Sidewalk Master Plans
- Present and gather community feedback on the draft plans in December 2018
- Revise and finalize the Cycling, Trails and Sidewalk Master Plans

